

Labor Market Policy Course

Developing Labor Market Information System
for
Labor Market Analysis
May 2, 2002



Lawrence Jeff Johnson
Chief, Key Indicators of the Labour Market (KILM)
International Labour Office,
Genève Switzerland



Key Indicators of the labour Market

<http://www.ilo.org/kilm>

Globalization and Technological Advances Lead to Change in the World of Work



Key Indicators of the labour Market

<http://www.ilo.org/kilm>

Decent Work Agenda



mic activities are people engaged in?

composition of the labor force?

people work and how much do they

- ✓ How many people are engaged in economic activities and looking for work?
- ✓ What types of jobs are available and looking for work? Example in terms of earnings and
- ✓ Are earnings keeping pace with the cost of living?
- ✓ How are youth and women faring in the labor market?



Key Indicators of the labour Market

<http://www.ilo.org/kilm>

Source of Labor Market Information

- labor force survey
- Establishment survey
- Population census
- Establishment census
- Industrial survey
- labor inspectorate records
- labor relations records
- Insurance records
- Collective agreements
- Administrative reports
- Employment official records
- Official estimates



Key Indicators of the labour Market

<http://www.ilo.org/kilm>

Factors used in making the appraisal

- **Reliability of the sources providing the data**
- **Availability of information regarding the scope of coverage**
- **Availability of disaggregated information (e.g., sex and age)**
- **Degree of historical coverage**



Key Indicators of the labour Market

<http://www.ilo.org/kilm>

Criteria for selection of the indicators:

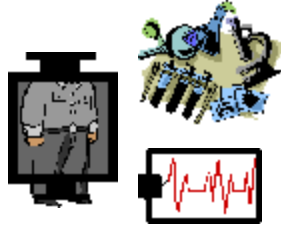
- The indicator is conceptually relevant.
- Data are available for the indicator.
- The indicator should be comparable.



Key Indicators of the labour Market

<http://www.ilo.org/kilm>

No single labor market indicator can paint a complete and accurate picture of the concerns being faced by policy makers and the social partners.



Similar to a medical examination, a number of labor market measurements are required.



Key Indicators of the labour Market

<http://www.ilo.org/kilm>

When developing indicators, one must strike a balance between:

Coverage

Maximize scope of coverage, i.e., provide the greatest number of data points for the greatest number of countries



Comparability

Harmonize the indicators across countries and time (same type of sources, sampling procedures, methodologies and definitions)



Key Indicators of the labour Market

<http://www.ilo.org/kilm>

Key Indicators of the labour Market

- Labour force participation rate
- Employment-to-population ratio
- Status in employment
- Employment by sector
- Part-time workers
- Hours of work
- Informal sector employment
- Unemployment
- Youth unemployment
- Long-term unemployment



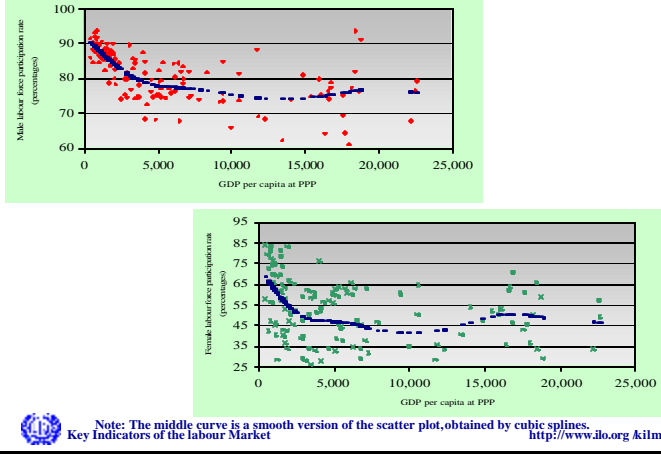
- Unemployment by educational attainment
- Time-related underemployment
- Inactivity rate
- Educational attainment and illiteracy
- Real manufacturing wage indices
- Occupational Wages Rates & Earnings
- Hourly compensation costs
- Productivity and unit labour cost
- labour Market Flows
- Poverty and income distribution



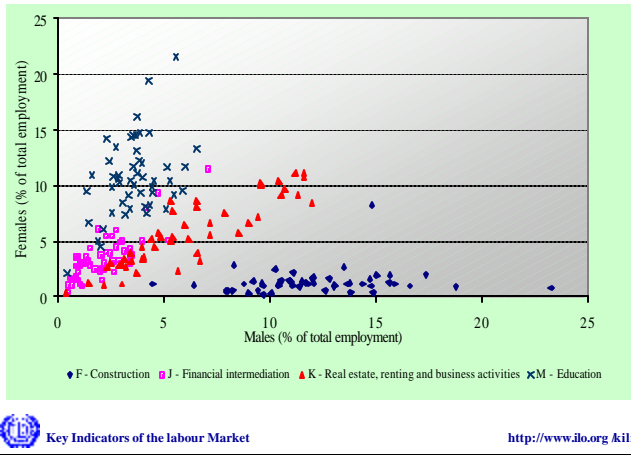
Key Indicators of the labour Market

<http://www.ilo.org/kilm>

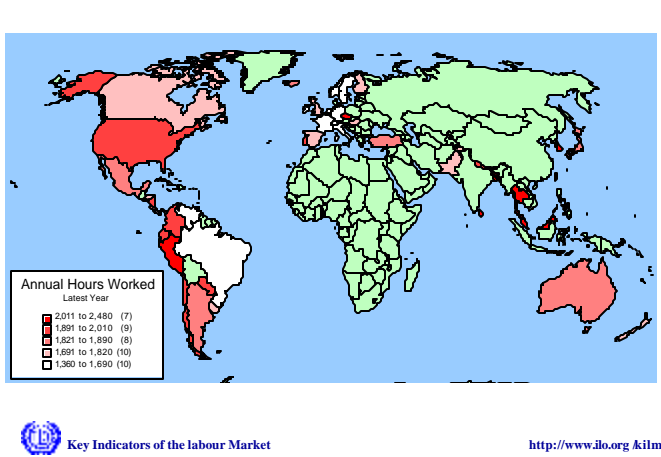
labour force participation rates and GDP per capita at PPP, 1990



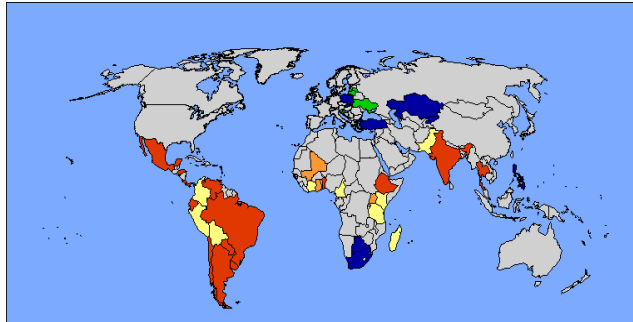
Employment by 1-digit sector level (ISIC 3), latest years



Annual number of hours worked per person



Informal sector employment as a percentage of employment, latest years



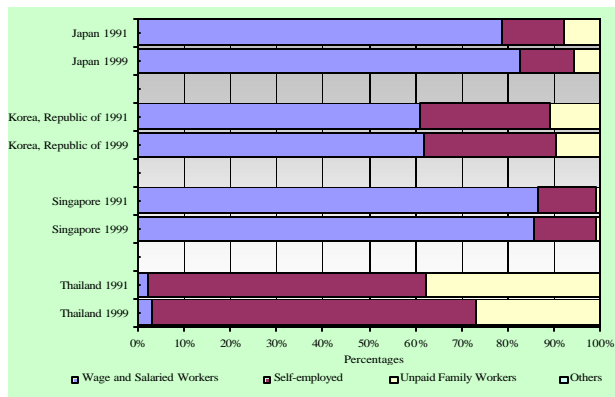
- Less than 10 percent
- Between 25 and 49.9 percent
- 70 percent or over
- Between 10 and 24.9 percent
- Between 50 and 69.9 percent



Key Indicators of the labour Market

<http://www.ilo.org/kilm>

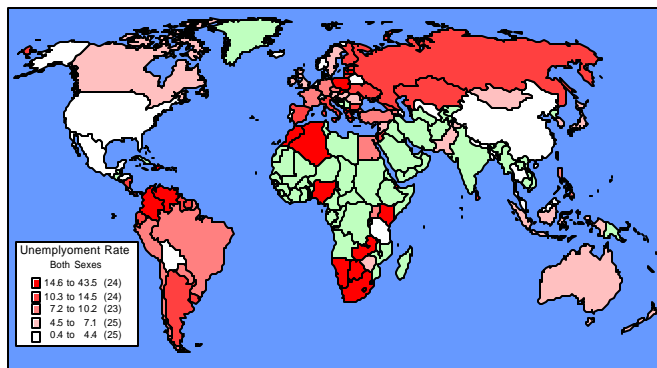
Status In Employment, Select Economies



Key Indicators of the labour Market

<http://www.ilo.org/kilm>

Unemployment Rates, Both Sexes



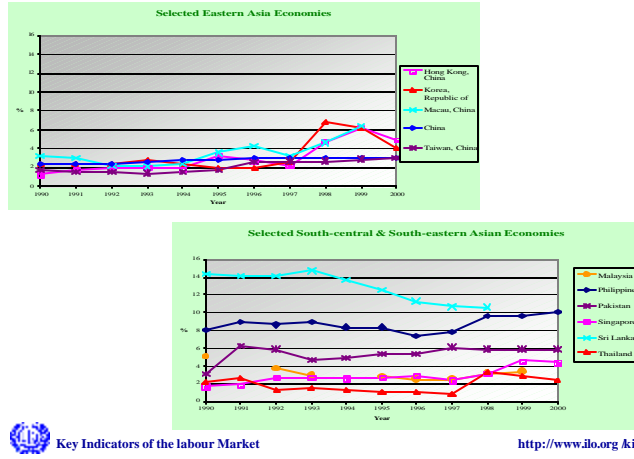
- Unemployment Rate
Both Sexes
- 14.6 to 43.5 (24)
 - 10.3 to 14.5 (24)
 - 7.2 to 10.2 (23)
 - 4.5 to 7.1 (25)
 - 0.4 to 4.4 (25)



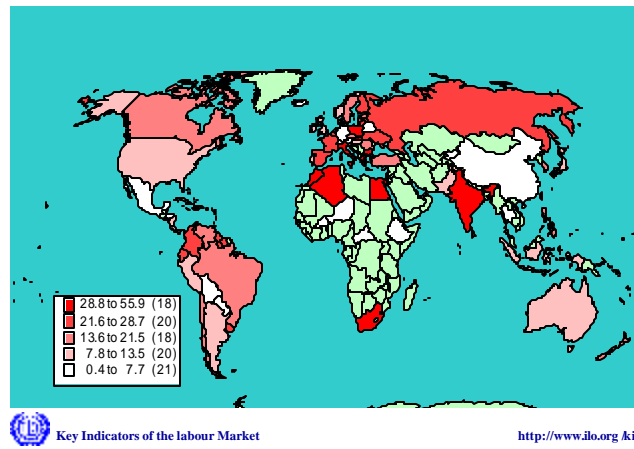
Key Indicators of the labour Market

<http://www.ilo.org/kilm>

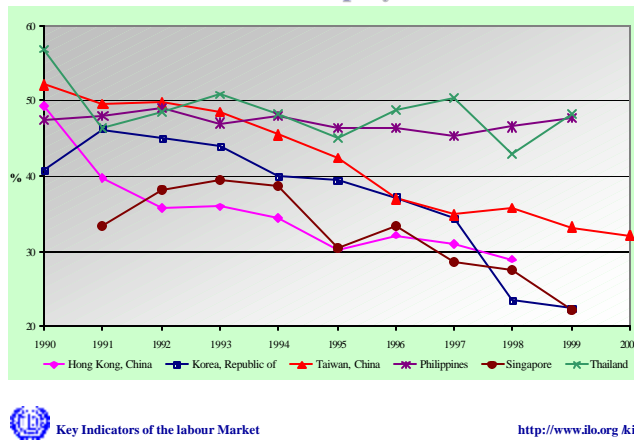
Rates of Unemployment in Asia, 1999 -2000



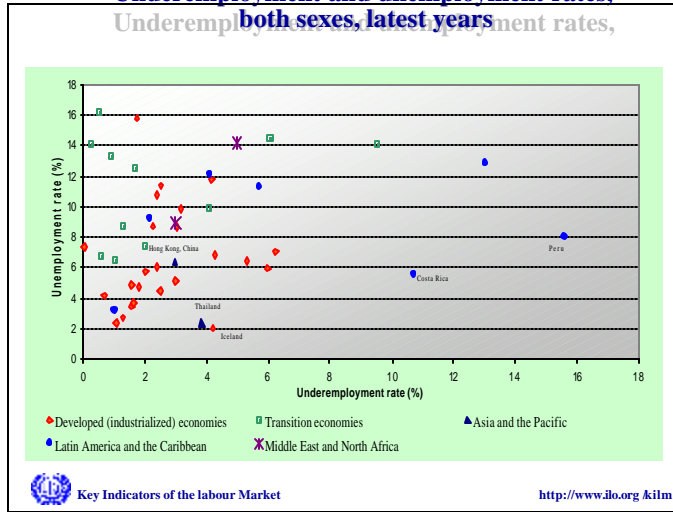
Youth Unemployment Rate, Both Sexes



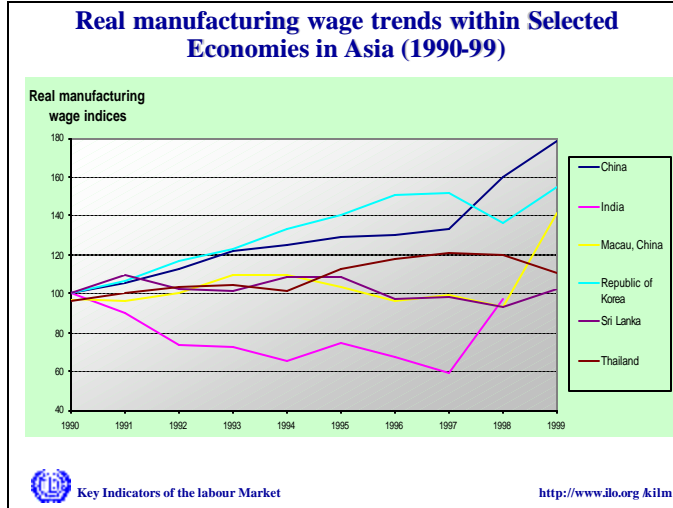
Share of Youth Unemployment in Total Unemployment



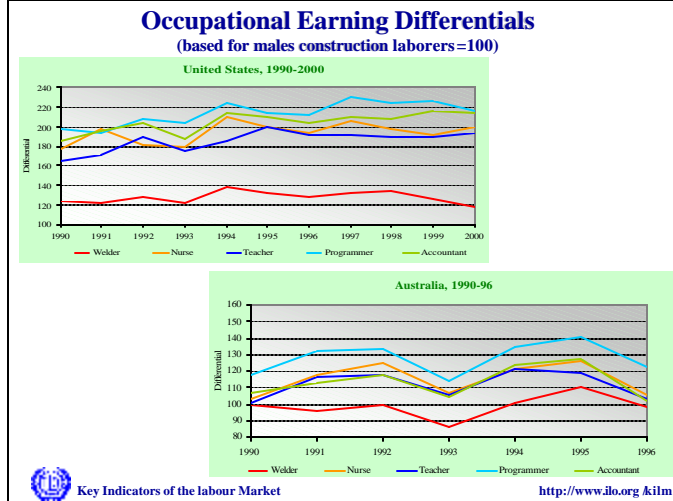
Underemployment and unemployment rates, both sexes, latest years



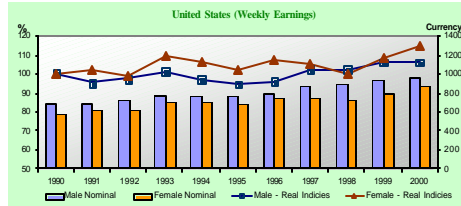
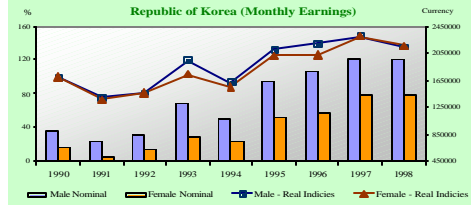
Real manufacturing wage trends within Selected Economies in Asia (1990-99)



Occupational Earning Differentials (based for males construction laborers=100)



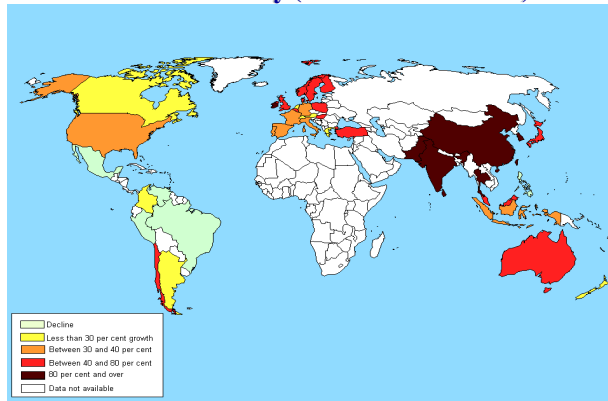
Computer Programmers by Sex



Key Indicators of the labour Market

<http://www.ilo.org/kilm>

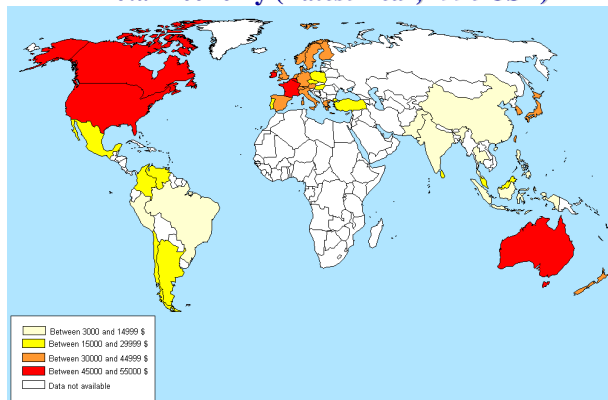
Growth in Value Added Per Person Employed Total Economy (1980 to Latest Year)



Key Indicators of the labour Market

<http://www.ilo.org/kilm>

Growth in Value Added Per Person Employed Total Economy (Latest Year, 1990 USD)



Key Indicators of the labour Market

<http://www.ilo.org/kilm>

On-Line ILM - Microsoft Internet Explorer

Key Indicators of the Labour Market

EILM 00 - Total Employment

World

- Europe
 - Eastern Europe
 - Latin America
- Central and Eastern Europe
- Central America and the Caribbean
- Latin America
- Major Group
- Minor Group
- Middle East
- North Africa
- Other Europe
- South and Central America
- South-Eastern Asia

1980, 1981, 1982, 1983, 1984, 1985, 1986, 1987, 1988, 1989, 1990, 1991, 1992, 1993, 1994, 1995, 1996, 1997, 1998, 1999, 2000

Source: ILO, ILOSTAT

Key Indicators of the labour Market <http://www.ilo.org/kilm>

On-Line ILM - Microsoft Internet Explorer

Key Indicators of the Labour Market

EILM 00 - Total Employment

Year	Country	Year Spc	Pop	IT	IT/Pop	Age 15-64	Source	Coverage
418	Latvia	1993 HP	595	426 78001	70 300000	15-09	L4001 STA	TE
418	Latvia	1993 HP	595	426 78001	70 300000	15-09	L4001 STA	TE
442	Latvia	1995 HP	595	426 78001	70 300000	15-09	L4001 STA	TE
442	Latvia	1995 HP	595	426 78001	70 300000	15-09	L4001 STA	TE
442	Latvia	1995 HP	595	426 78001	70 300000	15-09	L4001 STA	TE
442	Latvia	1995 HP	595	426 78001	70 300000	15-09	L4001 STA	TE
442	Latvia	1995 HP	595	426 78001	70 300000	15-09	L4001 STA	TE
442	Latvia	1995 HP	595	426 78001	70 300000	15-09	L4001 STA	TE
442	Latvia	1995 HP	595	426 78001	70 300000	15-09	L4001 STA	TE
442	Latvia	1995 HP	595	426 78001	70 300000	15-09	L4001 STA	TE

Key Indicators of the labour Market <http://www.ilo.org/kilm>

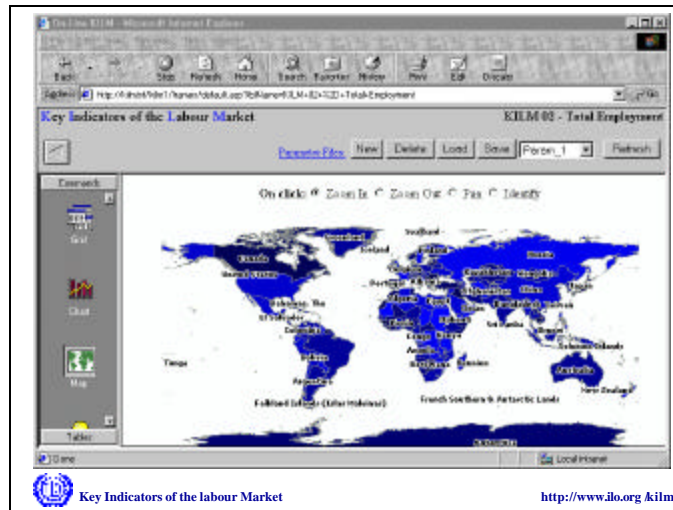
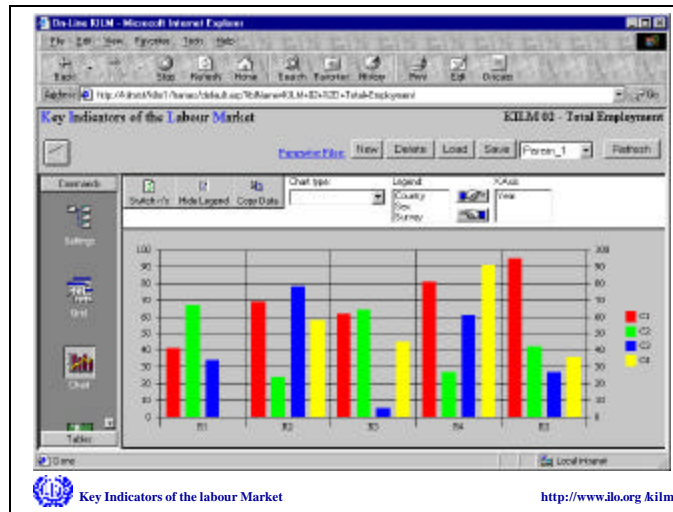
On-Line ILM - Microsoft Internet Explorer

Key Indicators of the Labour Market

EILM 00 - Total Employment

Year	Country	Year Spc	Pop	IT	IT/Pop	Age 15-64	Source	Coverage
418	Latvia	1993 HP	595	426 78001	70 300000	15-09	L4001 STA	TE
418	Latvia	1993 HP	595	426 78001	70 300000	15-09	L4001 STA	TE
442	Latvia	1995 HP	595	426 78001	70 300000	15-09	L4001 STA	TE
442	Latvia	1995 HP	595	426 78001	70 300000	15-09	L4001 STA	TE
442	Latvia	1995 HP	595	426 78001	70 300000	15-09	L4001 STA	TE
442	Latvia	1995 HP	595	426 78001	70 300000	15-09	L4001 STA	TE
442	Latvia	1995 HP	595	426 78001	70 300000	15-09	L4001 STA	TE
442	Latvia	1995 HP	595	426 78001	70 300000	15-09	L4001 STA	TE
442	Latvia	1995 HP	595	426 78001	70 300000	15-09	L4001 STA	TE
442	Latvia	1995 HP	595	426 78001	70 300000	15-09	L4001 STA	TE

Key Indicators of the labour Market <http://www.ilo.org/kilm>



Labor Market Policy Course

**Developing Labor Market Information System
for
Labor Market Analysis
May 2, 2002**



Lawrence Jeff Johnson
Chief, Key Indicators of the Labour Market (KILM)
International Labour Office,
Genève Switzerland

Key Indicators of the labour Market <http://www.ilo.org/kilm>