

## Country Data Report for AUSTRIA, 1996-2008

This Data Report provides a summary of the six aggregate governance indicators, together with all of the publicly-available disaggregated data on which the aggregate indicators are based. The underlying data as well as methodological issues are described more fully in "Governance Matters VIII: Governance Indicators for 1996-2008" (June 2009).

The Report displays the country's performance for all available years between 1996 and 2008 in six governance dimensions: i) Voice & Accountability, ii) Political Stability and Lack of Violence/Terrorism, iii) Government Effectiveness, iv) Regulatory Quality, v) Rule of Law, and vi) Control of Corruption. Each page shows the country's percentile rank on one of the six governance indicators. Percentile ranks indicate the percentage of countries worldwide that rate below the selected country. Higher values thus indicate better governance ratings. The graph also reports the margins of error displayed in the line charts by dashed lines, and corresponding to a 90% confidence interval. This means that there is a 90 percent probability that governance is within the indicated range.

Underneath the line charts, the Report also displays data from all the underlying sources used for that indicator. Individual ratings have been rescaled to run from 0 (low) to 1 (high). These scores are comparable over time and across countries since most individual measures are based on similar methodologies over time. Scores from different individual indicators are not however directly comparable with each other since the different data sources use different units and cover different sets of countries. The data from the individual indicators are in fact further rescaled to make them comparable across data sources before constructing the aggregate governance indicators. Note that for some variables we present an "NP", where "NP" stands for "Not Public", because the data is confidential and cannot be publicly disclosed at the request of the organizations producing the data. To find out more about each source/organization click on the provided links. More information about each of the underlying organization/source can also be found in Appendices A and B of the **Governance Matters VIII** paper.

### Relevant links:

[www.govindicators.org](http://www.govindicators.org)  
[www.worldbank.org/wbi/governance/](http://www.worldbank.org/wbi/governance/)

---

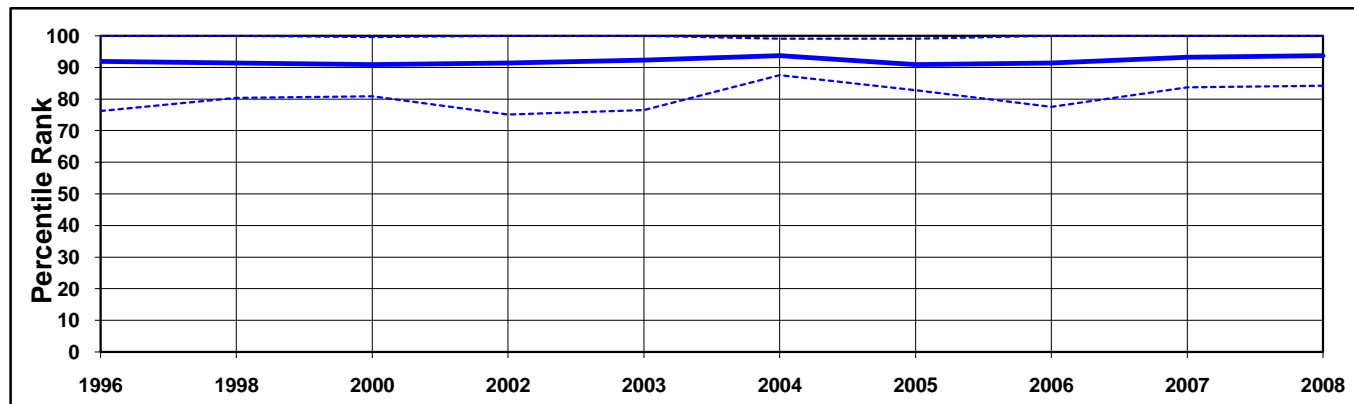
---

### Disclaimer

*The data and research reported here do not reflect the official views of the World Bank, its Executive Directors, or the countries they represent. The WGI are not used by the World Bank Group to allocate resources.*

AUSTRIA, 1996-2008

Aggregate Indicator: Voice & Accountability

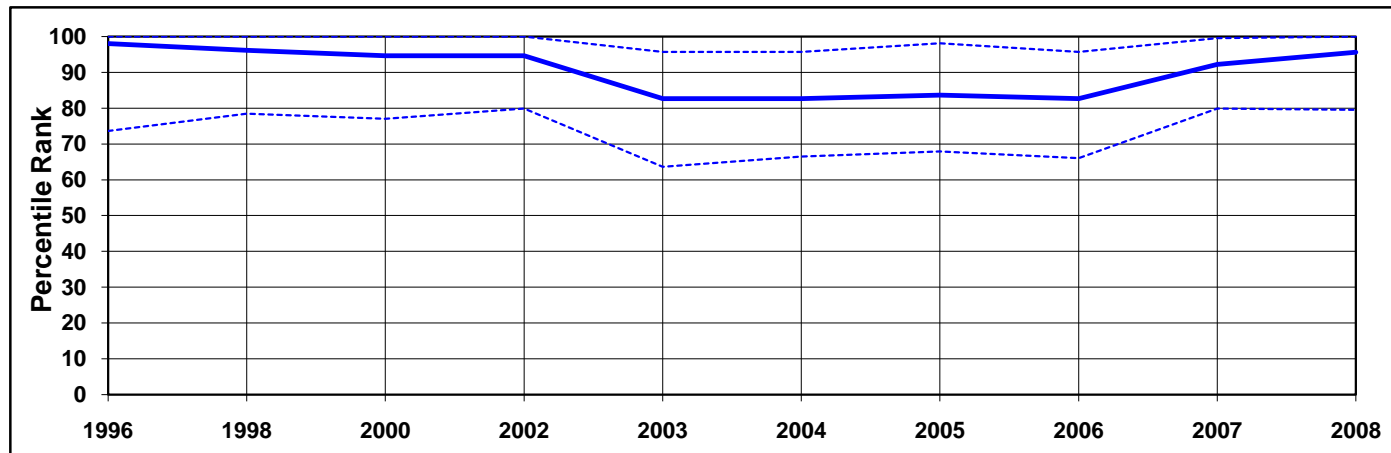


Individual Indicators used to construct Voice & Accountability

Code	Source	Website	1996	1998	2000	2002	2003	2004	2005	2006	2007	2008
AEO	OECD Development Center African Economic Outlook	<a href="http://www.oecd.org/dev/aeo">http://www.oecd.org/dev/aeo</a>	..	..	..	..	..	..	..	..	..	..
AFR	Afrobarometer	<a href="http://www.afrobarometer.org">http://www.afrobarometer.org</a>	..	..	..	..	..	..	..	..	..	..
BTI	Bertelsmann Transformation Index	<a href="http://www.bertelsmann-transformation-index.de/">http://www.bertelsmann-transformation-index.de/</a>	..	..	..	..	..	..	..	..	..	..
CCR	Freedom House Countries at the Crossroads	<a href="http://www.freedomhouse.org">http://www.freedomhouse.org</a>	..	..	..	..	..	..	..	..	..	..
EIU	Economist Intelligence Unit	<a href="http://www.eiu.com">http://www.eiu.com</a>	0.81	0.81	0.75	0.81	0.81	0.88	0.81	0.44	0.90	0.89
FRH	Freedom House	<a href="http://www.freedomhouse.org">http://www.freedomhouse.org</a>	0.94	0.94	0.93	0.89	0.89	0.90	0.90	0.90	0.90	0.90
GAD	Cerberus Corporate Intelligence Gray Area Dynamics	<a href="http://www.merchantinternational.com">http://www.merchantinternational.com</a>	..	..	..	..	..	..	..	..	..	0.93
GCS	World Economic Forum Global Competitiveness Survey	<a href="http://www.weforum.org">http://www.weforum.org</a>	..	..	0.57	0.70	0.58	0.62	0.64	0.72	0.73	0.65
GII	Global Integrity Index	<a href="http://www.globalintegrity.org/">http://www.globalintegrity.org/</a>	..	..	..	..	..	..	..	..	..	..
GWP	Gallup World Poll	<a href="http://www.gallupworldpoll.com">http://www.gallupworldpoll.com</a>	..	..	..	..	..	..	..	0.70	0.70	0.57
HUM	Cingranelli-Richards (CIRI) Human Rights Database	<a href="http://www.humanrightsdata.com">http://www.humanrightsdata.com</a>	0.88	0.88	0.88	0.88	0.88	0.88	0.88	0.88	0.88	0.88
IFD	IFAD Rural Sector Performance Assessments	<a href="http://www.ifad.org">http://www.ifad.org</a>	..	..	..	..	..	..	..	..	..	..
IPD	Institutional Profiles Database	<a href="http://www.cepii.fr/">http://www.cepii.fr/</a>	..	..	..	..	..	..	..	..	..	..
LBO	Latinobarometro	<a href="http://www.latinobarometro.org">http://www.latinobarometro.org</a>	..	..	..	..	..	..	..	..	..	..
MSI	IREX Media Sustainability Index	<a href="http://www.irex.org">http://www.irex.org</a>	..	..	..	..	..	..	..	..	..	..
OBI	International Budget Project Open Budget Index	<a href="http://www.internationalbudget.org/">http://www.internationalbudget.org/</a>	..	..	..	..	..	..	..	..	..	..
PRS	Political Risk Services International Country Risk Guide	<a href="http://www.prsgroup.com">http://www.prsgroup.com</a>	0.92	0.92	0.92	0.92	0.92	0.92	0.92	0.92	0.96	1.00
RSF	Reporters Without Borders Press Freedom Index	<a href="http://www.rsf.org">http://www.rsf.org</a>	..	..	..	0.93	0.97	0.97	0.98	0.96	0.96	0.97
VAB	Vanderbilt University Americas Barometer Survey	<a href="http://www.lapopsurveys.org">http://www.lapopsurveys.org</a>	..	..	..	..	..	..	..	..	..	..
WCY	Institute for management & development World Competitiveness Yearbook	<a href="http://www.imd.ch">http://www.imd.ch</a>	0.55	0.52	0.62	0.65	0.61	0.64	0.60	0.68	0.67	0.60
WMO	Global Insight Business Conditions and Risk Indicators	<a href="http://www.globalinsight.com">http://www.globalinsight.com</a>	..	1.00	1.00	1.00	1.00	0.90	1.00	1.00	1.00	1.00

AUSTRIA, 1996-2008

Aggregate Indicator: Political Stability and Absence of Violence

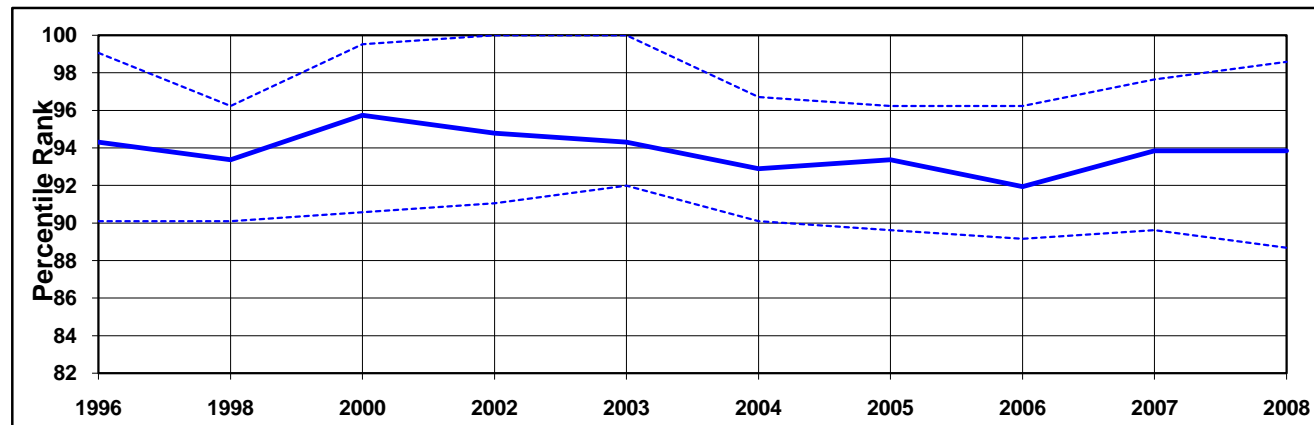


Individual Indicators used to construct Political Stability and Absence of Violence

Code	Source	Website	1996	1998	2000	2002	2003	2004	2005	2006	2007	2008
AEO	OECD Development Center African Economic Outlook	<a href="http://www.oecd.org/dev/aeo">http://www.oecd.org/dev/aeo</a>	..	..	..	..	..	..	..	..	..	..
BRI	Business Environment Risk Intelligence Business Risk Service	<a href="http://www.beri.com">http://www.beri.com</a>	0.90	0.89	0.92	0.90	0.92	0.92	0.90	0.90	0.90	0.87
DRI	Global Insight Global Risk Service	<a href="http://www.globalinsight.com">http://www.globalinsight.com</a>	0.99	0.99	0.99	0.98	0.96	0.97	0.98	0.98	0.98	0.98
EIU	Economist Intelligence Unit	<a href="http://www.eiu.com">http://www.eiu.com</a>	0.95	0.95	0.95	0.95	0.95	0.95	0.95	0.95	0.90	0.90
GAD	Cerberus Corporate Intelligence Gray Area Dynamics	<a href="http://www.merchantinternational.com">http://www.merchantinternational.com</a>	..	..	..	..	..	..	..	..	..	0.98
GCS	World Economic Forum Global Competitiveness Survey	<a href="http://www.weforum.org">http://www.weforum.org</a>	..	..	..	0.88	0.75	0.77	0.87	0.83	0.91	0.96
HUM	Cingranelli-Richards Human Rights Database & Political Terror Scale	<a href="http://www.humanrightsdata.com">http://www.humanrightsdata.com</a>	1.00	0.83	0.75	0.79	0.71	0.79	0.85	0.79	0.79	0.79
IJT	iJET Country Security Risk Ratings	<a href="https://worldcue.ijet.com/tic/login.jsp">https://worldcue.ijet.com/tic/login.jsp</a>	..	..	..	..	..	0.75	0.75	0.75	0.75	0.75
IPD	Institutional Profiles Database	<a href="http://www.cepii.fr/">http://www.cepii.fr/</a>	..	..	..	..	..	..	..	..	..	..
MIG	Cerberus Corporate Intelligence Gray Area Dynamics	<a href="http://www.merchantinternational.com">http://www.merchantinternational.com</a>	..	..	..	..	0.25	0.30	0.35	0.35	0.59	..
PRS	Political Risk Services International Country Risk Guide	<a href="http://www.prsgroup.com">http://www.prsgroup.com</a>	0.75	0.95	0.85	0.77	0.83	0.81	0.79	0.73	0.81	0.84
WCY	Institute for management & development World Competitiveness Yearbook	<a href="http://www.imd.ch">http://www.imd.ch</a>	..	..	0.87	0.82	0.84	0.93	0.93	0.94	0.97	0.92
WMO	Global Insight Business Conditions and Risk Indicators	<a href="http://www.globalinsight.com">http://www.globalinsight.com</a>	..	0.94	0.94	0.94	0.88	0.82	0.88	0.88	1.00	1.00

AUSTRIA, 1996-2008

Aggregate Indicator: Government Effectiveness

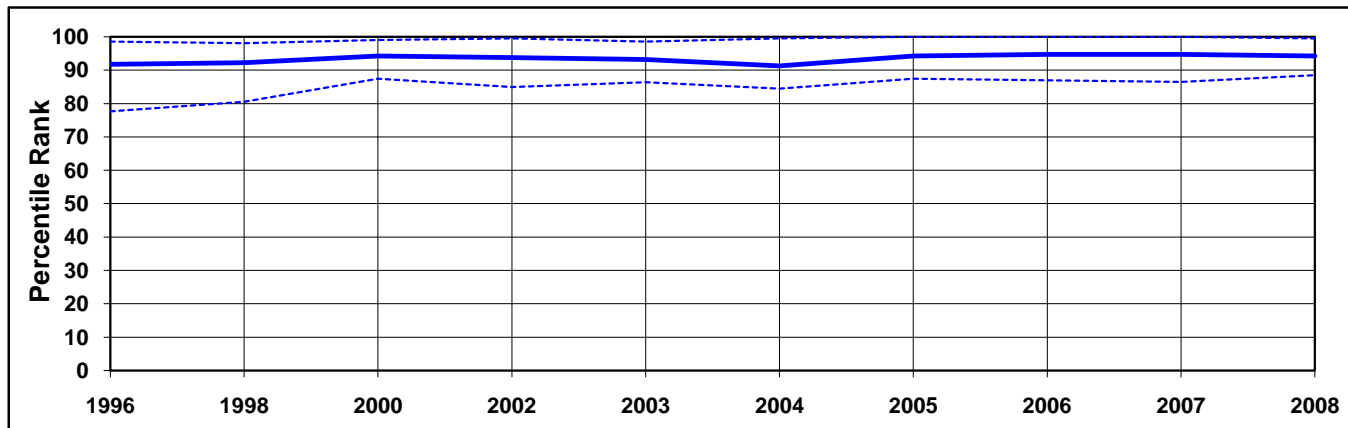


Individual Indicators used to construct Government Effectiveness

Code	Source	Website	1996	1998	2000	2002	2003	2004	2005	2006	2007	2008
ADB	African Development Bank Country Policy and Institutional Assessments	<a href="http://www.afdb.org/">http://www.afdb.org/</a>	..	..	..	..	..	..	..	..	..	..
AFR	Afrobarometer	<a href="http://www.afrobarometer.org">http://www.afrobarometer.org</a>	..	..	..	..	..	..	..	..	..	..
ASD	Asian Development Bank Country Policy and Institutional Assessments	<a href="http://www.adb.org/">http://www.adb.org/</a>	..	..	..	..	..	..	..	..	..	..
BPS	Business Enterprise Environment Survey	<a href="http://www.worldbank.org/eca/governance">http://www.worldbank.org/eca/governance</a>	..	..	..	..	..	..	..	..	..	..
BRI	Business Environment Risk Intelligence Business Risk Service	<a href="http://www.beri.com">http://www.beri.com</a>	0.60	0.60	0.60	0.60	0.58	0.58	0.58	0.58	0.58	0.58
BTI	Bertelsmann Transformation Index	<a href="http://www.bertelsmann-transformation-index.de/">http://www.bertelsmann-transformation-index.de/</a>	..	..	..	..	..	..	..	..	..	..
DRI	Global Insight Global Risk Service	<a href="http://www.globalinsight.com">http://www.globalinsight.com</a>	0.93	0.93	0.89	0.90	0.86	0.86	0.88	0.88	0.87	0.86
EGV	Brown University's Center for Public Policy	<a href="http://www.insidepolitics.org/egovt06int.pdf">http://www.insidepolitics.org/egovt06int.pdf</a>	..	..	..	0.47	0.36	0.28	0.28	0.31	0.36	0.34
EIU	Economist Intelligence Unit	<a href="http://www.eiu.com">http://www.eiu.com</a>	1.00	1.00	1.00	1.00	1.00	0.88	0.88	0.75	0.75	0.75
GCS	World Economic Forum Global Competitiveness Survey	<a href="http://www.weforum.org">http://www.weforum.org</a>	0.72	0.76	0.90	0.85	0.83	0.81	0.81	0.80	0.80	0.83
GWP	Gallup World Poll	<a href="http://www.gallupworldpoll.com">http://www.gallupworldpoll.com</a>	..	..	..	..	..	..	..	0.74	0.74	0.71
IFD	IFAD Rural Sector Performance Assessments	<a href="http://www.ifad.org">http://www.ifad.org</a>	..	..	..	..	..	..	..	..	..	..
IPD	Institutional Profiles Database	<a href="http://www.cepii.fr/">http://www.cepii.fr/</a>	..	..	..	..	..	..	..	..	..	..
LBO	Latinobarometro	<a href="http://www.latinobarometro.org">http://www.latinobarometro.org</a>	..	..	..	..	..	..	..	..	..	..
MIG	Cerberus Corporate Intelligence Gray Area Dynamics	<a href="http://www.merchantinternational.com">http://www.merchantinternational.com</a>	..	..	..	..	0.50	0.50	0.50	0.50	0.50	..
PIA	World Bank Country Policy and Institutional Assessments	<a href="http://www.worldbank.org">http://www.worldbank.org</a>	..	..	..	..	..	..	..	..	..	..
PRS	Political Risk Services International Country Risk Guide	<a href="http://www.prsgroup.com">http://www.prsgroup.com</a>	1.00	0.67	1.00	1.00	1.00	1.00	1.00	1.00	1.00	1.00
WCY	Institute for management & development World Competitiveness Yearbook	<a href="http://www.imd.ch">http://www.imd.ch</a>	0.56	0.35	0.59	0.56	0.53	0.58	0.56	0.65	0.65	0.54
WMO	Global Insight Business Conditions and Risk Indicators	<a href="http://www.globalinsight.com">http://www.globalinsight.com</a>	..	0.94	0.94	0.94	0.94	0.81	0.88	0.88	0.88	0.88

AUSTRIA, 1996-2008

Aggregate Indicator: Regulatory Quality

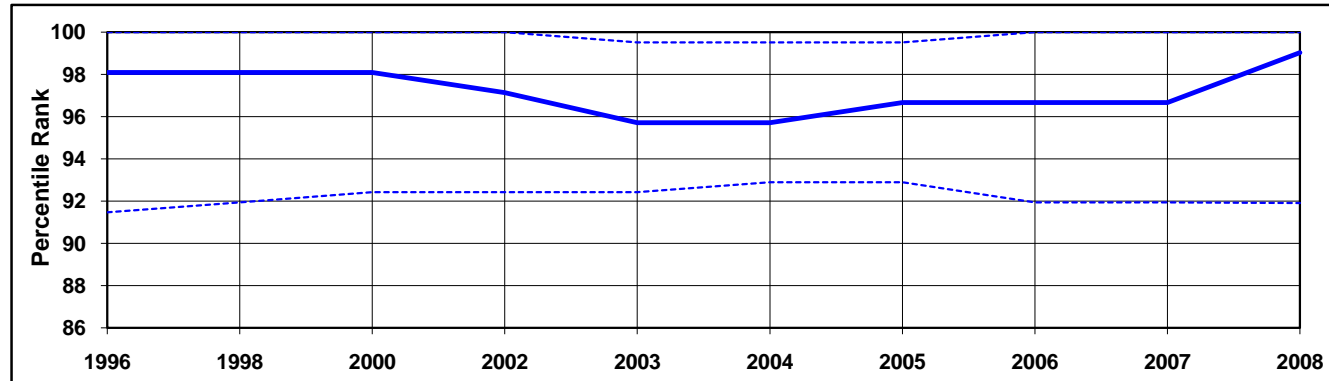


Individual Indicators used to construct Regulatory Quality

Code	Source	Website	1996	1998	2000	2002	2003	2004	2005	2006	2007	2008
ADB	African Development Bank Country Policy and Institutional Assessments	<a href="http://www.afdb.org/">http://www.afdb.org/</a>	..	..	..	..	..	..	..	..	..	..
ASD	Asian Development Bank Country Policy and Institutional Assessments	<a href="http://www.adb.org/">http://www.adb.org/</a>	..	..	..	..	..	..	..	..	..	..
BPS	Business Enterprise Environment Survey	<a href="http://www.worldbank.org/eca/governance">http://www.worldbank.org/eca/governance</a>	..	..	..	..	..	..	..	..	..	..
BTI	Bertelsmann Transformation Index	<a href="http://www.bertelsmann-transformation-index.de/">http://www.bertelsmann-transformation-index.de/</a>	..	..	..	..	..	..	..	..	..	..
DRI	Global Insight Global Risk Service	<a href="http://www.globalinsight.com">http://www.globalinsight.com</a>	0.96	0.96	0.95	0.93	0.93	0.93	0.94	0.94	0.93	0.91
EBR	European Bank for Reconstruction & Development Transition Report	<a href="http://www.ebrd.org">http://www.ebrd.org</a>	..	..	..	..	..	..	..	..	..	..
EIU	Economist Intelligence Unit	<a href="http://www.eiu.com">http://www.eiu.com</a>	0.75	0.75	0.75	0.80	0.80	0.80	0.85	0.80	0.80	0.80
GAD	Cerberus Corporate Intelligence Gray Area Dynamics	<a href="http://www.merchantinternational.com">http://www.merchantinternational.com</a>	..	..	..	..	..	..	..	..	..	1.00
GCS	World Economic Forum Global Competitiveness Survey	<a href="http://www.weforum.org">http://www.weforum.org</a>	0.58	0.57	0.66	0.57	0.59	0.65	0.65	0.67	0.71	0.64
HER	Heritage Foundation Index of Economic Freedom	<a href="http://www.heritage.org">http://www.heritage.org</a>	0.80	0.70	0.70	0.70	0.70	0.70	0.70	0.70	0.70	0.70
IFD	IFAD Rural Sector Performance Assessments	<a href="http://www.ifad.org">http://www.ifad.org</a>	..	..	..	..	..	..	..	..	..	..
IPD	Institutional Profiles Database	<a href="http://www.cepii.fr/">http://www.cepii.fr/</a>	..	..	..	..	..	..	..	..	..	..
MIG	Merchant International Group Gray Area Dynamics	<a href="http://www.merchantinternational.com">http://www.merchantinternational.com</a>	..	..	..	..	0.50	0.50	0.50	0.55	0.53	..
PIA	World Bank Country Policy and Institutional Assessments	<a href="http://www.worldbank.org">http://www.worldbank.org</a>	..	..	..	..	..	..	..	..	..	..
PRS	Political Risk Services International Country Risk Guide	<a href="http://www.prsgroup.com">http://www.prsgroup.com</a>	0.45	0.75	0.82	1.00	1.00	1.00	1.00	1.00	1.00	1.00
WCY	Institute for management & development World Competitiveness Yearbook	<a href="http://www.imd.ch">http://www.imd.ch</a>	0.66	0.65	0.75	0.74	0.71	0.71	0.69	0.75	0.74	0.67
WMO	Global Insight Business Conditions and Risk Indicators	<a href="http://www.globalinsight.com">http://www.globalinsight.com</a>	..	1.00	1.00	1.00	1.00	0.88	1.00	1.00	1.00	1.00

AUSTRIA, 1996-2008

Aggregate Indicator: Rule of Law

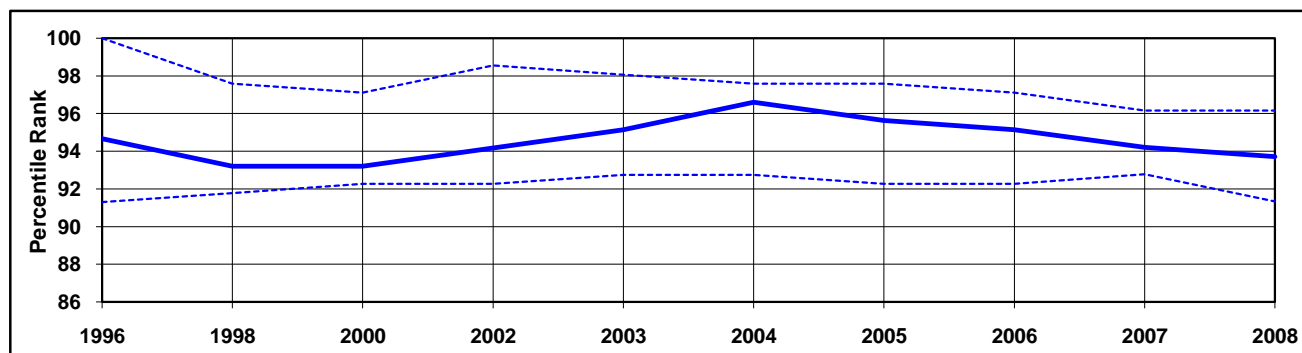


Individual Indicators used to construct Rule of Law

Code	Source	Website	1996	1998	2000	2002	2003	2004	2005	2006	2007	2008
ADB	African Development Bank Country Policy and Institutional Assessments	<a href="http://www.afdb.org/">http://www.afdb.org/</a>	..	..	..	..	..	..	..	..	..	..
AFR	Afrobarometer	<a href="http://www.afrobarometer.org">http://www.afrobarometer.org</a>	..	..	..	..	..	..	..	..	..	..
ASD	Asian Development Bank Country Policy and Institutional Assessments	<a href="http://www.adb.org/">http://www.adb.org/</a>	..	..	..	..	..	..	..	..	..	..
BPS	Business Enterprise Environment Survey	<a href="http://www.worldbank.org/eca/governance">http://www.worldbank.org/eca/governance</a>	..	..	..	..	..	..	..	..	..	..
BRI	Business Environment Risk Intelligence Business Risk Service	<a href="http://www.beri.com">http://www.beri.com</a>	0.86	0.87	0.87	0.88	0.89	0.89	0.89	0.89	0.89	0.89
BTI	Bertelsmann Transformation Index	<a href="http://www.bertelsmann-transformation-index.de/">http://www.bertelsmann-transformation-index.de/</a>	..	..	..	..	..	..	..	..	..	..
CCR	Freedom House Countries at the Crossroads	<a href="http://www.freedomhouse.org">http://www.freedomhouse.org</a>	..	..	..	..	..	..	..	..	..	..
DRI	Global Insight Global Risk Service	<a href="http://www.globalinsight.com">http://www.globalinsight.com</a>	0.97	0.97	0.97	0.97	0.97	0.97	0.97	0.97	0.97	0.96
EIU	Economist Intelligence Unit	<a href="http://www.eiu.com">http://www.eiu.com</a>	0.94	0.94	0.94	0.94	0.94	0.94	0.94	0.94	0.94	0.94
FRH	Freedom House	<a href="http://www.freedomhouse.org">http://www.freedomhouse.org</a>	..	..	..	..	..	..	..	..	..	..
GAD	Cerberus Corporate Intelligence Gray Area Dynamics	<a href="http://www.merchantinternational.com">http://www.merchantinternational.com</a>	..	..	..	..	..	..	..	..	..	1.00
GCS	World Economic Forum Global Competitiveness Survey	<a href="http://www.weforum.org">http://www.weforum.org</a>	0.82	0.81	0.84	0.77	0.72	0.79	0.81	0.84	0.88	0.86
GII	Global Integrity Index	<a href="http://www.globalintegrity.org/">http://www.globalintegrity.org/</a>	..	..	..	..	..	..	..	..	..	..
GWP	Gallup World Poll	<a href="http://www.gallupworldpoll.com">http://www.gallupworldpoll.com</a>	..	..	..	..	..	..	..	0.82	0.82	0.81
HER	Heritage Foundation Index of Economic Freedom	<a href="http://www.heritage.org">http://www.heritage.org</a>	0.90	0.90	0.90	0.90	0.90	0.90	0.90	0.90	0.90	0.90
HUM	Cingranelli-Richards (CIRI) Human Rights Database	<a href="http://www.humanrightsdata.com">http://www.humanrightsdata.com</a>	1.00	1.00	1.00	1.00	1.00	1.00	1.00	1.00	1.00	1.00
IFD	IFAD Rural Sector Performance Assessments	<a href="http://www.ifad.org">http://www.ifad.org</a>	..	..	..	..	..	..	..	..	..	..
IPD	Institutional Profiles Database	<a href="http://www.cepii.fr/">http://www.cepii.fr/</a>	..	..	..	..	..	..	..	..	..	..
LBO	Latinobarometro	<a href="http://www.latinobarometro.org">http://www.latinobarometro.org</a>	..	..	..	..	..	..	..	..	..	..
MIG	Merchant International Group Gray Area Dynamics	<a href="http://www.merchantinternational.com">http://www.merchantinternational.com</a>	..	..	..	..	0.48	0.48	0.48	0.48	0.51	..
PIA	World Bank Country Policy and Institutional Assessments	<a href="http://www.worldbank.org">http://www.worldbank.org</a>	..	..	..	..	..	..	..	..	..	..
PRS	Political Risk Services International Country Risk Guide	<a href="http://www.prsgroup.com">http://www.prsgroup.com</a>	1.00	1.00	1.00	1.00	1.00	1.00	1.00	1.00	1.00	1.00
TPR	US State Department Trafficking in People report	<a href="http://www.state.gov/g/tip/rls/tiprpt">http://www.state.gov/g/tip/rls/tiprpt</a>	..	..	1.00	1.00	1.00	1.00	1.00	1.00	1.00	1.00
VAB	Vanderbilt University Americas Barometer Survey	<a href="http://www.lapopsurveys.org">http://www.lapopsurveys.org</a>	..	..	..	..	..	..	..	..	..	..
WCY	Institute for management & development World Competitiveness Yearbook	<a href="http://www.imd.ch">http://www.imd.ch</a>	0.75	0.67	0.83	0.79	0.77	0.81	0.76	0.81	0.81	0.78
WMO	Global Insight Business Conditions and Risk Indicators	<a href="http://www.globalinsight.com">http://www.globalinsight.com</a>	..	1.00	1.00	1.00	1.00	0.89	1.00	1.00	1.00	1.00

AUSTRIA, 1996-2008

Aggregate Indicator: Control of Corruption



Individual Indicators used to construct Control of Corruption

Code	Source	Website	1996	1998	2000	2002	2003	2004	2005	2006	2007	2008
ADB	African Development Bank Country Policy and Institutional Assessments	<a href="http://www.afdb.org/">http://www.afdb.org/</a>	..	..	..	..	..	..	..	..	..	..
AFR	Afrobarometer	<a href="http://www.afrobarometer.org">http://www.afrobarometer.org</a>	..	..	..	..	..	..	..	..	..	..
ASD	Asian Development Bank Country Policy and Institutional Assessments	<a href="http://www.adb.org/">http://www.adb.org/</a>	..	..	..	..	..	..	..	..	..	..
BPS	Business Enterprise Environment Survey	<a href="http://www.worldbank.org/eca/governance">http://www.worldbank.org/eca/governance</a>	..	..	..	..	..	..	..	..	..	..
BRI	Business Environment Risk Intelligence Business Risk Service	<a href="http://www.beri.com">http://www.beri.com</a>	0.81	0.82	0.83	0.83	0.83	0.83	0.83	0.83	0.83	0.76
BTI	Bertelsmann Transformation Index	<a href="http://www.bertelsmann-transformation-index.de/">http://www.bertelsmann-transformation-index.de/</a>	..	..	..	..	..	..	..	..	..	..
CCR	Freedom House Countries at the Crossroads	<a href="http://www.freedomhouse.org">http://www.freedomhouse.org</a>	..	..	..	..	..	..	..	..	..	..
DRI	Global Insight Global Risk Service	<a href="http://www.globalinsight.com">http://www.globalinsight.com</a>	0.96	0.96	0.96	0.96	0.96	0.96	0.96	0.97	0.97	0.93
EIU	Economist Intelligence Unit	<a href="http://www.eiu.com">http://www.eiu.com</a>	1.00	1.00	1.00	1.00	1.00	1.00	1.00	1.00	1.00	1.00
FRH	Freedom House	<a href="http://www.freedomhouse.org">http://www.freedomhouse.org</a>	..	..	..	..	..	..	..	..	..	..
GAD	Cerberus Corporate Intelligence Gray Area Dynamics	<a href="http://www.merchantinternational.com">http://www.merchantinternational.com</a>	..	..	..	..	..	..	..	..	..	0.60
GCB	Transparency International Global Corruption Barometer Survey	<a href="http://www.transparency.org">http://www.transparency.org</a>	..	..	..	..	..	0.79	0.75	0.76	0.78	0.77
GCS	World Economic Forum Global Competitiveness Survey	<a href="http://www.weforum.org">http://www.weforum.org</a>	0.87	0.93	0.79	0.79	0.77	0.81	0.81	0.85	0.85	0.79
GII	Global Integrity Index	<a href="http://www.globalintegrity.org/">http://www.globalintegrity.org/</a>	..	..	..	..	..	..	..	..	..	..
GWP	Gallup World Poll	<a href="http://www.gallupworldpoll.com">http://www.gallupworldpoll.com</a>	..	..	..	..	..	..	..	0.64	0.64	0.47
IFD	IFAD Rural Sector Performance Assessments	<a href="http://www.ifad.org">http://www.ifad.org</a>	..	..	..	..	..	..	..	..	..	..
IPD	Institutional Profiles Database	<a href="http://www.cepii.fr/">http://www.cepii.fr/</a>	..	..	..	..	..	..	..	..	..	..
LBO	Latinobarometro	<a href="http://www.latinobarometro.org">http://www.latinobarometro.org</a>	..	..	..	..	..	..	..	..	..	..
MIG	Merchant International Group Gray Area Dynamics	<a href="http://www.merchantinternational.com">http://www.merchantinternational.com</a>	..	..	..	..	0.50	0.50	0.50	0.50	0.61	..
PIA	World Bank Country Policy and Institutional Assessments	<a href="http://www.worldbank.org">http://www.worldbank.org</a>	..	..	..	..	..	..	..	..	..	..
PRC	Political Economic Risk Consultancy Corruption in Asia	<a href="http://www.asiarisk.com/">http://www.asiarisk.com/</a>	..	..	..	..	..	..	..	..	..	..
PRS	Political Risk Services International Country Risk Guide	<a href="http://www.prsgroup.com">http://www.prsgroup.com</a>	0.83	0.67	0.75	0.83	0.83	0.83	0.83	0.83	0.83	0.83
VAB	Vanderbilt University Americas Barometer Survey	<a href="http://www.lapopsurveys.org">http://www.lapopsurveys.org</a>	..	..	..	..	..	..	..	..	..	..
WCY	Institute for management & development World Competitiveness Yearbook	<a href="http://www.imd.ch">http://www.imd.ch</a>	0.72	0.59	0.69	0.75	0.78	0.82	0.73	0.78	0.80	0.72
WMO	Global Insight Business Conditions and Risk Indicators	<a href="http://www.globalinsight.com">http://www.globalinsight.com</a>	..	0.88	0.88	0.88	1.00	0.88	1.00	0.88	0.88	0.88