

## Country Data Report for BRUNEI, 1996-2008

This Data Report provides a summary of the six aggregate governance indicators, together with all of the publicly-available disaggregated data on which the aggregate indicators are based. The underlying data as well as methodological issues are described more fully in "Governance Matters VIII: Governance Indicators for 1996-2008" (June 2009).

The Report displays the country's performance for all available years between 1996 and 2008 in six governance dimensions: i) Voice & Accountability, ii) Political Stability and Lack of Violence/Terrorism, iii) Government Effectiveness, iv) Regulatory Quality, v) Rule of Law, and vi) Control of Corruption. Each page shows the country's percentile rank on one of the six governance indicators. Percentile ranks indicate the percentage of countries worldwide that rate below the selected country. Higher values thus indicate better governance ratings. The graph also reports the margins of error displayed in the line charts by dashed lines, and corresponding to a 90% confidence interval. This means that there is a 90 percent probability that governance is within the indicated range.

Underneath the line charts, the Report also displays data from all the underlying sources used for that indicator. Individual ratings have been rescaled to run from 0 (low) to 1 (high). These scores are comparable over time and across countries since most individual measures are based on similar methodologies over time. Scores from different individual indicators are not however directly comparable with each other since the different data sources use different units and cover different sets of countries. The data from the individual indicators are in fact further rescaled to make them comparable across data sources before constructing the aggregate governance indicators. Note that for some variables we present an "NP", where "NP" stands for "Not Public", because the data is confidential and cannot be publicly disclosed at the request of the organizations producing the data. To find out more about each source/organization click on the provided links. More information about each of the underlying organization/source can also be found in Appendices A and B of the **Governance Matters VIII** paper.

### Relevant links:

[www.govindicators.org](http://www.govindicators.org)  
[www.worldbank.org/wbi/governance/](http://www.worldbank.org/wbi/governance/)

---

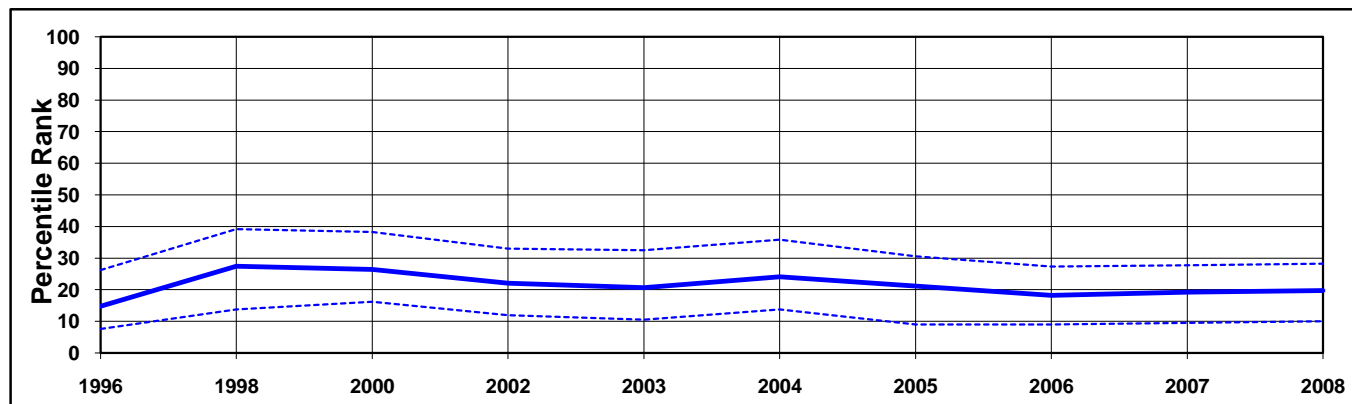
---

### Disclaimer

*The data and research reported here do not reflect the official views of the World Bank, its Executive Directors, or the countries they represent. The WGI are not used by the World Bank Group to allocate resources.*

BRUNEI, 1996-2008

Aggregate Indicator: Voice & Accountability

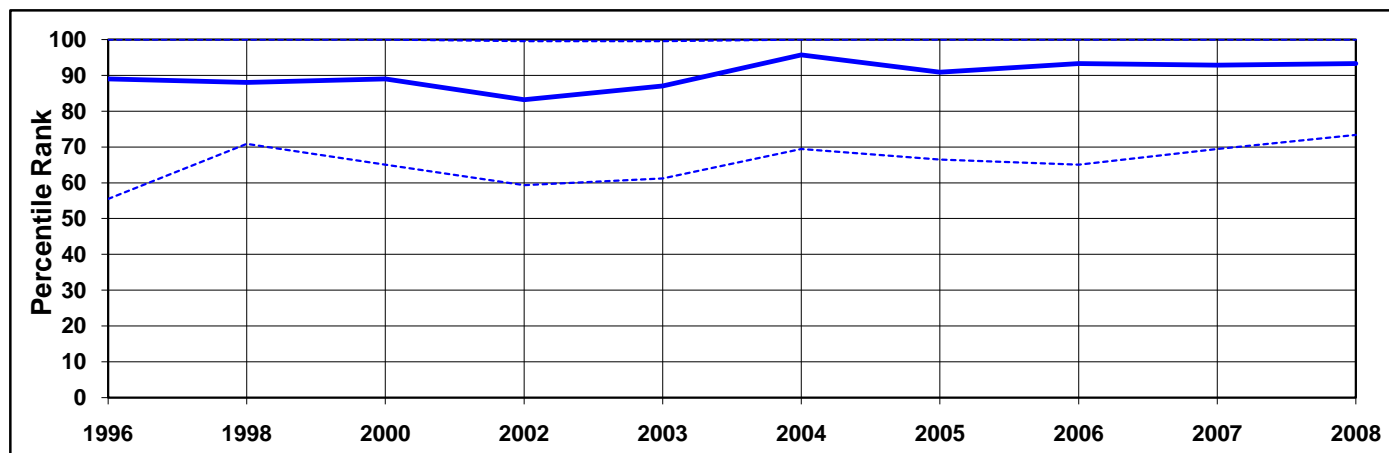


Individual Indicators used to construct Voice & Accountability

| Code | Source  | Website   | 1996 | 1998 | 2000 | 2002 | 2003 | 2004 | 2005 | 2006 | 2007 | 2008 |
|------|---|---|------|------|------|------|------|------|------|------|------|------|
| AEO  | OECD Development Center African Economic Outlook                      | <a href="http://www.oecd.org/dev/aeo">http://www.oecd.org/dev/aeo</a>   | ..   | ..   | ..   | ..   | ..   | ..   | ..   | ..   | ..   | ..   |
| AFR  | Afrobarometer   | <a href="http://www.afrobarometer.org">http://www.afrobarometer.org</a>                                       | ..   | ..   | ..   | ..   | ..   | ..   | ..   | ..   | ..   | ..   |
| BTI  | Bertelsmann Transformation Index                                      | <a href="http://www.bertelsmann-transformation-index.de/">http://www.bertelsmann-transformation-index.de/</a> | ..   | ..   | ..   | ..   | ..   | ..   | ..   | ..   | ..   | ..   |
| CCR  | Freedom House Countries at the Crossroads                             | <a href="http://www.freedomhouse.org">http://www.freedomhouse.org</a>   | ..   | ..   | ..   | ..   | ..   | ..   | ..   | ..   | ..   | ..   |
| EIU  | Economist Intelligence Unit   | <a href="http://www.eiu.com">http://www.eiu.com</a>   | ..   | ..   | ..   | ..   | ..   | ..   | ..   | ..   | ..   | ..   |
| FRH  | Freedom House   | <a href="http://www.freedomhouse.org">http://www.freedomhouse.org</a>   | 0.21 | 0.21 | 0.21 | 0.25 | 0.26 | 0.25 | 0.24 | 0.25 | 0.25 | 0.25 |
| GAD  | Cerberus Corporate Intelligence Gray Area Dynamics                    | <a href="http://www.merchantinternational.com">http://www.merchantinternational.com</a>                       | ..   | ..   | ..   | ..   | ..   | ..   | ..   | ..   | ..   | ..   |
| GCS  | World Economic Forum Global Competitiveness Survey                    | <a href="http://www.weforum.org">http://www.weforum.org</a>   | ..   | ..   | ..   | ..   | ..   | ..   | ..   | ..   | ..   | 0.51 |
| GII  | Global Integrity Index  | <a href="http://www.globalintegrity.org/">http://www.globalintegrity.org/</a>                                 | ..   | ..   | ..   | ..   | ..   | ..   | ..   | ..   | ..   | ..   |
| GWP  | Gallup World Poll   | <a href="http://www.gallupworldpoll.com">http://www.gallupworldpoll.com</a>                                   | ..   | ..   | ..   | ..   | ..   | ..   | ..   | ..   | ..   | ..   |
| HUM  | Cingranelli-Richards (CIRI) Human Rights Database                     | <a href="http://www.humanrightsdata.com">http://www.humanrightsdata.com</a>                                   | 0.38 | 0.50 | 0.63 | 0.50 | 0.25 | 0.50 | 0.13 | 0.38 | 0.44 | 0.44 |
| IFD  | IFAD Rural Sector Performance Assessments                             | <a href="http://www.ifad.org">http://www.ifad.org</a>   | ..   | ..   | ..   | ..   | ..   | ..   | ..   | ..   | ..   | ..   |
| IPD  | Institutional Profiles Database                                       | <a href="http://www.cepii.fr/">http://www.cepii.fr/</a>   | ..   | ..   | ..   | ..   | ..   | ..   | ..   | ..   | ..   | ..   |
| LBO  | Latinobarometro   | <a href="http://www.latinobarometro.org">http://www.latinobarometro.org</a>                                   | ..   | ..   | ..   | ..   | ..   | ..   | ..   | ..   | ..   | ..   |
| MSI  | IREX Media Sustainability Index                                       | <a href="http://www.irex.org">http://www.irex.org</a>   | ..   | ..   | ..   | ..   | ..   | ..   | ..   | ..   | ..   | ..   |
| OBI  | International Budget Project Open Budget Index                        | <a href="http://www.internationalbudget.org/">http://www.internationalbudget.org/</a>                         | ..   | ..   | ..   | ..   | ..   | ..   | ..   | ..   | ..   | ..   |
| PRS  | Political Risk Services International Country Risk Guide              | <a href="http://www.prsgroup.com">http://www.prsgroup.com</a>   | 0.50 | 0.42 | 0.42 | 0.42 | 0.42 | 0.46 | 0.46 | 0.46 | 0.46 | 0.46 |
| RSF  | Reporters Without Borders Press Freedom Index                         | <a href="http://www.rsf.org">http://www.rsf.org</a>   | ..   | ..   | ..   | 0.62 | ..   | ..   | ..   | ..   | ..   | ..   |
| VAB  | Vanderbilt University Americas Barometer Survey                       | <a href="http://www.lapopsurveys.org">http://www.lapopsurveys.org</a>   | ..   | ..   | ..   | ..   | ..   | ..   | ..   | ..   | ..   | ..   |
| WCY  | Institute for management & development World Competitiveness Yearbook | <a href="http://www.imd.ch">http://www.imd.ch</a>   | ..   | ..   | ..   | ..   | ..   | ..   | ..   | ..   | ..   | ..   |
| WMO  | Global Insight Business Conditions and Risk Indicators                | <a href="http://www.globalinsight.com">http://www.globalinsight.com</a>                                       | ..   | 0.56 | 0.56 | 0.56 | 0.50 | 0.44 | 0.50 | 0.50 | 0.50 | 0.50 |

BRUNEI, 1996-2008

Aggregate Indicator: Political Stability and Absence of Violence

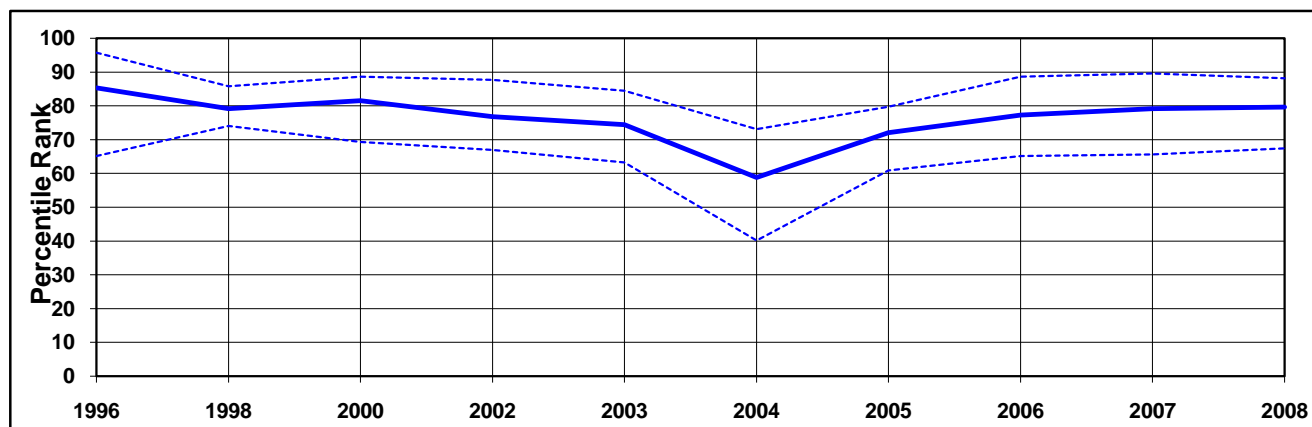


Individual Indicators used to construct Political Stability and Absence of Violence

| Code | Source  | Website   | 1996 | 1998 | 2000 | 2002 | 2003 | 2004 | 2005 | 2006 | 2007 | 2008 |
|------|---|---|------|------|------|------|------|------|------|------|------|------|
| AEO  | OECD Development Center African Economic Outlook                      | <a href="http://www.oecd.org/dev/aeo">http://www.oecd.org/dev/aeo</a>                         | ..   | ..   | ..   | ..   | ..   | ..   | ..   | ..   | ..   | ..   |
| BRI  | Business Environment Risk Intelligence Business Risk Service          | <a href="http://www.beri.com">http://www.beri.com</a>   | ..   | ..   | ..   | ..   | ..   | ..   | ..   | ..   | ..   | ..   |
| DRI  | Global Insight Global Risk Service                                    | <a href="http://www.globalinsight.com">http://www.globalinsight.com</a>                       | ..   | ..   | ..   | ..   | ..   | ..   | ..   | ..   | ..   | ..   |
| EIU  | Economist Intelligence Unit   | <a href="http://www.eiu.com">http://www.eiu.com</a>   | ..   | ..   | ..   | ..   | ..   | ..   | ..   | ..   | ..   | ..   |
| GAD  | Cerberus Corporate Intelligence Gray Area Dynamics                    | <a href="http://www.merchantinternational.com">http://www.merchantinternational.com</a>       | ..   | ..   | ..   | ..   | ..   | ..   | ..   | ..   | ..   | ..   |
| GCS  | World Economic Forum Global Competitiveness Survey                    | <a href="http://www.weforum.org">http://www.weforum.org</a>                                   | ..   | ..   | ..   | ..   | ..   | ..   | ..   | ..   | ..   | 0.91 |
| HUM  | Cingranelli-Richards Human Rights Database & Political Terror Scale   | <a href="http://www.humanrightsdata.com">http://www.humanrightsdata.com</a>                   | 1.00 | 0.92 | 0.92 | 0.88 | 0.88 | 0.94 | 1.00 | 1.00 | 1.00 | 1.00 |
| IJT  | iJET Country Security Risk Ratings                                    | <a href="https://worldcue.ijet.com/tic/login.jsp">https://worldcue.ijet.com/tic/login.jsp</a> | ..   | ..   | ..   | ..   | ..   | ..   | ..   | ..   | ..   | 0.75 |
| IPD  | Institutional Profiles Database                                       | <a href="http://www.cepii.fr/">http://www.cepii.fr/</a>                                       | ..   | ..   | ..   | ..   | ..   | ..   | ..   | ..   | ..   | ..   |
| MIG  | Cerberus Corporate Intelligence Gray Area Dynamics                    | <a href="http://www.merchantinternational.com">http://www.merchantinternational.com</a>       | ..   | ..   | ..   | ..   | ..   | ..   | ..   | ..   | ..   | ..   |
| PRS  | Political Risk Services International Country Risk Guide              | <a href="http://www.prsgroup.com">http://www.prsgroup.com</a>                                 | 0.84 | 0.93 | 0.90 | 0.90 | 0.92 | 0.91 | 0.94 | 0.94 | 0.94 | 0.94 |
| WCY  | Institute for management & development World Competitiveness Yearbook | <a href="http://www.imd.ch">http://www.imd.ch</a>   | ..   | ..   | ..   | ..   | ..   | ..   | ..   | ..   | ..   | ..   |
| WMO  | Global Insight Business Conditions and Risk Indicators                | <a href="http://www.globalinsight.com">http://www.globalinsight.com</a>                       | ..   | 1.00 | 1.00 | 0.88 | 0.88 | 0.88 | 0.88 | 0.88 | 0.88 | 0.88 |

BRUNEI, 1996-2008

Aggregate Indicator: Government Effectiveness

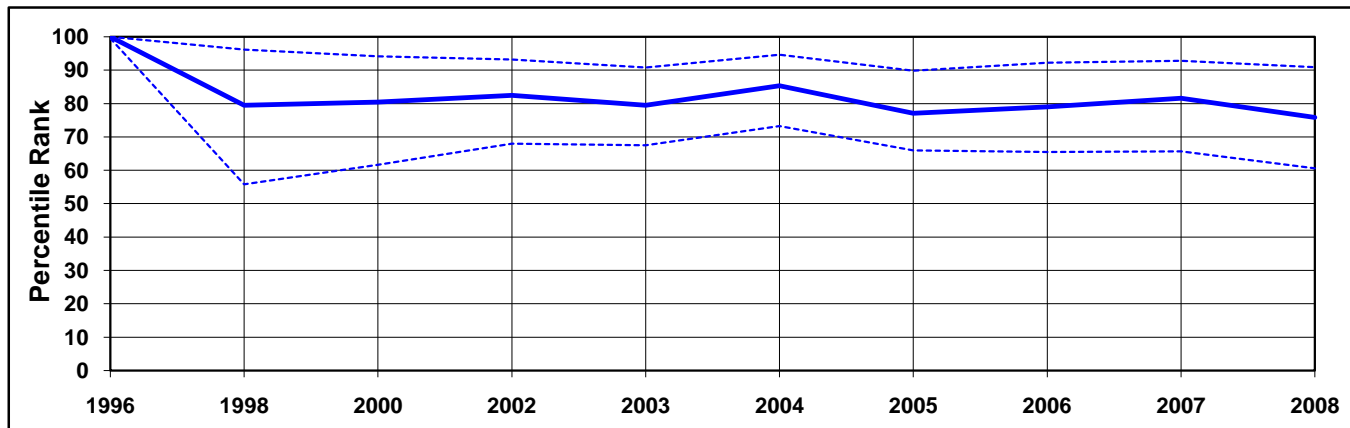


Individual Indicators used to construct Government Effectiveness

| Code | Source  | Website   | 1996 | 1998 | 2000 | 2002 | 2003 | 2004 | 2005 | 2006 | 2007 | 2008 |
|------|---|---|------|------|------|------|------|------|------|------|------|------|
| ADB  | African Development Bank Country Policy and Institutional Assessments | <a href="http://www.afdb.org/">http://www.afdb.org/</a>   | ..   | ..   | ..   | ..   | ..   | ..   | ..   | ..   | ..   | ..   |
| AFR  | Afrobarometer   | <a href="http://www.afrobarometer.org">http://www.afrobarometer.org</a>                                       | ..   | ..   | ..   | ..   | ..   | ..   | ..   | ..   | ..   | ..   |
| ASD  | Asian Development Bank Country Policy and Institutional Assessments   | <a href="http://www.adb.org/">http://www.adb.org/</a>   | ..   | ..   | ..   | ..   | ..   | ..   | ..   | ..   | ..   | ..   |
| BPS  | Business Enterprise Environment Survey                                | <a href="http://www.worldbank.org/eca/governance">http://www.worldbank.org/eca/governance</a>                 | ..   | ..   | ..   | ..   | ..   | ..   | ..   | ..   | ..   | ..   |
| BRI  | Business Environment Risk Intelligence Business Risk Service          | <a href="http://www.beri.com">http://www.beri.com</a>   | ..   | ..   | ..   | ..   | ..   | ..   | ..   | ..   | ..   | ..   |
| BTI  | Bertelsmann Transformation Index                                      | <a href="http://www.bertelsmann-transformation-index.de/">http://www.bertelsmann-transformation-index.de/</a> | ..   | ..   | ..   | ..   | ..   | ..   | ..   | ..   | ..   | ..   |
| DRI  | Global Insight Global Risk Service                                    | <a href="http://www.globalinsight.com">http://www.globalinsight.com</a>                                       | ..   | ..   | ..   | ..   | ..   | ..   | ..   | ..   | ..   | ..   |
| EGV  | Brown University's Center for Public Policy                           | <a href="http://www.insidepolitics.org/egovt06int.pdf">http://www.insidepolitics.org/egovt06int.pdf</a>       | ..   | ..   | ..   | 0.36 | 0.33 | 0.22 | 0.29 | 0.27 | 0.37 | 0.41 |
| EIU  | Economist Intelligence Unit   | <a href="http://www.eiu.com">http://www.eiu.com</a>   | ..   | ..   | ..   | ..   | ..   | ..   | ..   | ..   | ..   | ..   |
| GCS  | World Economic Forum Global Competitiveness Survey                    | <a href="http://www.weforum.org">http://www.weforum.org</a>   | ..   | ..   | ..   | ..   | ..   | ..   | ..   | ..   | ..   | 0.61 |
| GWP  | Gallup World Poll   | <a href="http://www.gallupworldpoll.com">http://www.gallupworldpoll.com</a>                                   | ..   | ..   | ..   | ..   | ..   | ..   | ..   | ..   | ..   | ..   |
| IFD  | IFAD Rural Sector Performance Assessments                             | <a href="http://www.ifad.org">http://www.ifad.org</a>   | ..   | ..   | ..   | ..   | ..   | ..   | ..   | ..   | ..   | ..   |
| IPD  | Institutional Profiles Database                                       | <a href="http://www.cepii.fr/">http://www.cepii.fr/</a>   | ..   | ..   | ..   | ..   | ..   | ..   | ..   | ..   | ..   | ..   |
| LBO  | Latinobarometro   | <a href="http://www.latinobarometro.org">http://www.latinobarometro.org</a>                                   | ..   | ..   | ..   | ..   | ..   | ..   | ..   | ..   | ..   | ..   |
| MIG  | Cerberus Corporate Intelligence Gray Area Dynamics                    | <a href="http://www.merchantinternational.com">http://www.merchantinternational.com</a>                       | ..   | ..   | ..   | ..   | ..   | ..   | ..   | ..   | ..   | ..   |
| PIA  | World Bank Country Policy and Institutional Assessments               | <a href="http://www.worldbank.org">http://www.worldbank.org</a>   | ..   | ..   | ..   | ..   | ..   | ..   | ..   | ..   | ..   | ..   |
| PRS  | Political Risk Services International Country Risk Guide              | <a href="http://www.prsgroup.com">http://www.prsgroup.com</a>   | 0.83 | 0.50 | 0.75 | 0.75 | 0.75 | 0.75 | 0.75 | 0.88 | 0.88 | 0.88 |
| WCY  | Institute for management & development World Competitiveness Yearbook | <a href="http://www.imd.ch">http://www.imd.ch</a>   | ..   | ..   | ..   | ..   | ..   | ..   | ..   | ..   | ..   | ..   |
| WMO  | Global Insight Business Conditions and Risk Indicators                | <a href="http://www.globalinsight.com">http://www.globalinsight.com</a>                                       | ..   | 0.75 | 0.75 | 0.75 | 0.69 | 0.49 | 0.69 | 0.69 | 0.69 | 0.69 |

BRUNEI, 1996-2008

Aggregate Indicator: Regulatory Quality

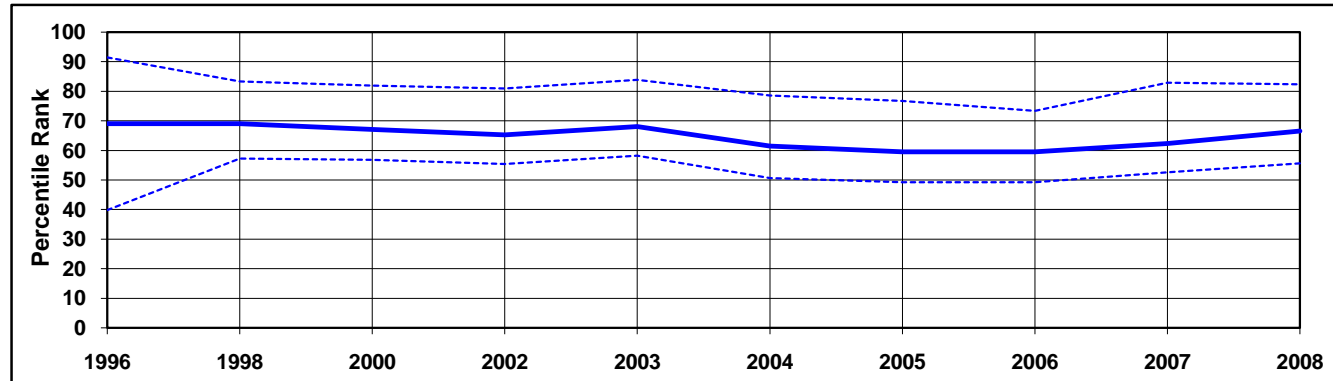


Individual Indicators used to construct Regulatory Quality

| Code | Source  | Website   | 1996 | 1998 | 2000 | 2002 | 2003 | 2004 | 2005 | 2006 | 2007 | 2008 |
|------|---|---|------|------|------|------|------|------|------|------|------|------|
| ADB  | African Development Bank Country Policy and Institutional Assessments | <a href="http://www.afdb.org/">http://www.afdb.org/</a>   | ..   | ..   | ..   | ..   | ..   | ..   | ..   | ..   | ..   | ..   |
| ASD  | Asian Development Bank Country Policy and Institutional Assessments   | <a href="http://www.adb.org/">http://www.adb.org/</a>   | ..   | ..   | ..   | ..   | ..   | ..   | ..   | ..   | ..   | ..   |
| BPS  | Business Enterprise Environment Survey                                | <a href="http://www.worldbank.org/eca/governance">http://www.worldbank.org/eca/governance</a>                 | ..   | ..   | ..   | ..   | ..   | ..   | ..   | ..   | ..   | ..   |
| BTI  | Bertelsmann Transformation Index                                      | <a href="http://www.bertelsmann-transformation-index.de/">http://www.bertelsmann-transformation-index.de/</a> | ..   | ..   | ..   | ..   | ..   | ..   | ..   | ..   | ..   | ..   |
| DRI  | Global Insight Global Risk Service                                    | <a href="http://www.globalinsight.com">http://www.globalinsight.com</a>                                       | ..   | ..   | ..   | ..   | ..   | ..   | ..   | ..   | ..   | ..   |
| EBR  | European Bank for Reconstruction & Development Transition Report      | <a href="http://www.ebrd.org">http://www.ebrd.org</a>   | ..   | ..   | ..   | ..   | ..   | ..   | ..   | ..   | ..   | ..   |
| EIU  | Economist Intelligence Unit   | <a href="http://www.eiu.com">http://www.eiu.com</a>   | ..   | ..   | ..   | ..   | ..   | ..   | ..   | ..   | ..   | ..   |
| GAD  | Cerberus Corporate Intelligence Gray Area Dynamics                    | <a href="http://www.merchantinternational.com">http://www.merchantinternational.com</a>                       | ..   | ..   | ..   | ..   | ..   | ..   | ..   | ..   | ..   | ..   |
| GCS  | World Economic Forum Global Competitiveness Survey                    | <a href="http://www.weforum.org">http://www.weforum.org</a>   | ..   | ..   | ..   | ..   | ..   | ..   | ..   | ..   | ..   | 0.56 |
| HER  | Heritage Foundation Index of Economic Freedom                         | <a href="http://www.heritage.org">http://www.heritage.org</a>   | ..   | ..   | ..   | ..   | ..   | ..   | ..   | ..   | ..   | ..   |
| IFD  | IFAD Rural Sector Performance Assessments                             | <a href="http://www.ifad.org">http://www.ifad.org</a>   | ..   | ..   | ..   | ..   | ..   | ..   | ..   | ..   | ..   | ..   |
| IPD  | Institutional Profiles Database                                       | <a href="http://www.cepii.fr/">http://www.cepii.fr/</a>   | ..   | ..   | ..   | ..   | ..   | ..   | ..   | ..   | ..   | ..   |
| MIG  | Merchant International Group Gray Area Dynamics                       | <a href="http://www.merchantinternational.com">http://www.merchantinternational.com</a>                       | ..   | ..   | ..   | ..   | ..   | ..   | ..   | ..   | ..   | ..   |
| PIA  | World Bank Country Policy and Institutional Assessments               | <a href="http://www.worldbank.org">http://www.worldbank.org</a>   | ..   | ..   | ..   | ..   | ..   | ..   | ..   | ..   | ..   | ..   |
| PRS  | Political Risk Services International Country Risk Guide              | <a href="http://www.prsgroup.com">http://www.prsgroup.com</a>   | 0.91 | 0.58 | 0.64 | 0.95 | 0.95 | 0.95 | 0.95 | 0.95 | 0.95 | 0.95 |
| WCY  | Institute for management & development World Competitiveness Yearbook | <a href="http://www.imd.ch">http://www.imd.ch</a>   | ..   | ..   | ..   | ..   | ..   | ..   | ..   | ..   | ..   | ..   |
| WMO  | Global Insight Business Conditions and Risk Indicators                | <a href="http://www.globalinsight.com">http://www.globalinsight.com</a>                                       | ..   | 0.81 | 0.81 | 0.81 | 0.81 | 0.80 | 0.81 | 0.81 | 0.81 | 0.75 |

BRUNEI, 1996-2008

Aggregate Indicator: Rule of Law

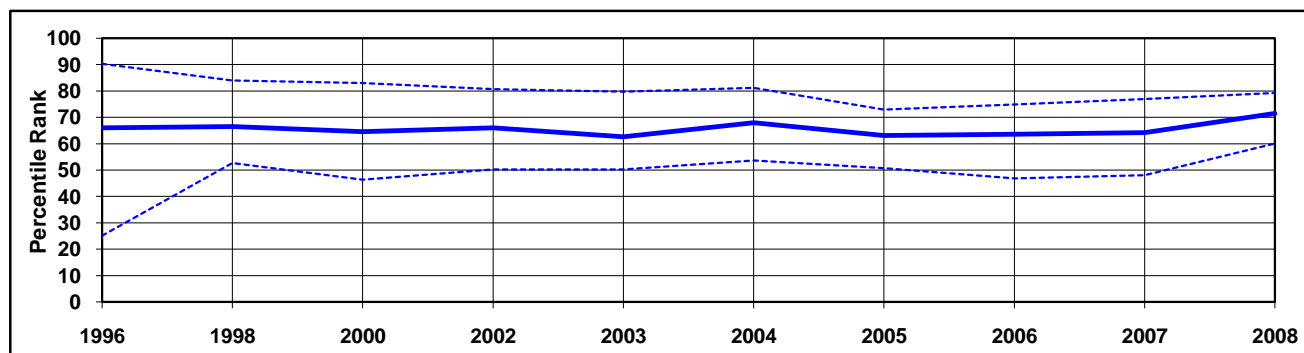


Individual Indicators used to construct Rule of Law

| Code | Source  | Website   | 1996 | 1998 | 2000 | 2002 | 2003 | 2004 | 2005 | 2006 | 2007 | 2008 |
|------|---|---|------|------|------|------|------|------|------|------|------|------|
| ADB  | African Development Bank Country Policy and Institutional Assessments | <a href="http://www.afdb.org/">http://www.afdb.org/</a>   | ..   | ..   | ..   | ..   | ..   | ..   | ..   | ..   | ..   | ..   |
| AFR  | Afrobarometer   | <a href="http://www.afrobarometer.org">http://www.afrobarometer.org</a>                                       | ..   | ..   | ..   | ..   | ..   | ..   | ..   | ..   | ..   | ..   |
| ASD  | Asian Development Bank Country Policy and Institutional Assessments   | <a href="http://www.adb.org/">http://www.adb.org/</a>   | ..   | ..   | ..   | ..   | ..   | ..   | ..   | ..   | ..   | ..   |
| BPS  | Business Enterprise Environment Survey                                | <a href="http://www.worldbank.org/eca/governance">http://www.worldbank.org/eca/governance</a>                 | ..   | ..   | ..   | ..   | ..   | ..   | ..   | ..   | ..   | ..   |
| BRI  | Business Environment Risk Intelligence Business Risk Service          | <a href="http://www.beri.com">http://www.beri.com</a>   | ..   | ..   | ..   | ..   | ..   | ..   | ..   | ..   | ..   | ..   |
| BTI  | Bertelsmann Transformation Index                                      | <a href="http://www.bertelsmann-transformation-index.de/">http://www.bertelsmann-transformation-index.de/</a> | ..   | ..   | ..   | ..   | ..   | ..   | ..   | ..   | ..   | ..   |
| CCR  | Freedom House Countries at the Crossroads                             | <a href="http://www.freedomhouse.org">http://www.freedomhouse.org</a>   | ..   | ..   | ..   | ..   | ..   | ..   | ..   | ..   | ..   | ..   |
| DRI  | Global Insight Global Risk Service                                    | <a href="http://www.globalinsight.com">http://www.globalinsight.com</a>                                       | ..   | ..   | ..   | ..   | ..   | ..   | ..   | ..   | ..   | ..   |
| EIU  | Economist Intelligence Unit   | <a href="http://www.eiu.com">http://www.eiu.com</a>   | ..   | ..   | ..   | ..   | ..   | ..   | ..   | ..   | ..   | ..   |
| FRH  | Freedom House   | <a href="http://www.freedomhouse.org">http://www.freedomhouse.org</a>   | ..   | ..   | ..   | ..   | ..   | ..   | ..   | ..   | ..   | ..   |
| GAD  | Cerberus Corporate Intelligence Gray Area Dynamics                    | <a href="http://www.merchantinternational.com">http://www.merchantinternational.com</a>                       | ..   | ..   | ..   | ..   | ..   | ..   | ..   | ..   | ..   | ..   |
| GCS  | World Economic Forum Global Competitiveness Survey                    | <a href="http://www.weforum.org">http://www.weforum.org</a>   | ..   | ..   | ..   | ..   | ..   | ..   | ..   | ..   | ..   | 0.65 |
| GII  | Global Integrity Index  | <a href="http://www.globalintegrity.org/">http://www.globalintegrity.org/</a>                                 | ..   | ..   | ..   | ..   | ..   | ..   | ..   | ..   | ..   | ..   |
| GWP  | Gallup World Poll   | <a href="http://www.gallupworldpoll.com">http://www.gallupworldpoll.com</a>                                   | ..   | ..   | ..   | ..   | ..   | ..   | ..   | ..   | ..   | ..   |
| HER  | Heritage Foundation Index of Economic Freedom                         | <a href="http://www.heritage.org">http://www.heritage.org</a>   | ..   | ..   | ..   | ..   | ..   | ..   | ..   | ..   | ..   | ..   |
| HUM  | Cingranelli-Richards (CIRI) Human Rights Database                     | <a href="http://www.humanrightsdata.com">http://www.humanrightsdata.com</a>                                   | 0.50 | 0.50 | 0.50 | 0.50 | 1.00 | 0.50 | 0.00 | 0.00 | 0.50 | 0.50 |
| IFD  | IFAD Rural Sector Performance Assessments                             | <a href="http://www.ifad.org">http://www.ifad.org</a>   | ..   | ..   | ..   | ..   | ..   | ..   | ..   | ..   | ..   | ..   |
| IPD  | Institutional Profiles Database                                       | <a href="http://www.cepii.fr/">http://www.cepii.fr/</a>   | ..   | ..   | ..   | ..   | ..   | ..   | ..   | ..   | ..   | ..   |
| LBO  | Latinobarometro   | <a href="http://www.latinobarometro.org">http://www.latinobarometro.org</a>                                   | ..   | ..   | ..   | ..   | ..   | ..   | ..   | ..   | ..   | ..   |
| MIG  | Merchant International Group Gray Area Dynamics                       | <a href="http://www.merchantinternational.com">http://www.merchantinternational.com</a>                       | ..   | ..   | ..   | ..   | ..   | ..   | ..   | ..   | ..   | ..   |
| PIA  | World Bank Country Policy and Institutional Assessments               | <a href="http://www.worldbank.org">http://www.worldbank.org</a>   | ..   | ..   | ..   | ..   | ..   | ..   | ..   | ..   | ..   | ..   |
| PRS  | Political Risk Services International Country Risk Guide              | <a href="http://www.prsgroup.com">http://www.prsgroup.com</a>   | 1.00 | 1.00 | 1.00 | 1.00 | 1.00 | 1.00 | 0.83 | 0.83 | 0.83 | 0.83 |
| TPR  | US State Department Trafficking in People report                      | <a href="http://www.state.gov/g/tip/rls/tiprpt">http://www.state.gov/g/tip/rls/tiprpt</a>                     | ..   | ..   | ..   | 0.50 | ..   | ..   | ..   | ..   | ..   | ..   |
| VAB  | Vanderbilt University Americas Barometer Survey                       | <a href="http://www.lapopsurveys.org">http://www.lapopsurveys.org</a>   | ..   | ..   | ..   | ..   | ..   | ..   | ..   | ..   | ..   | ..   |
| WCY  | Institute for management & development World Competitiveness Yearbook | <a href="http://www.imd.ch">http://www.imd.ch</a>   | ..   | ..   | ..   | ..   | ..   | ..   | ..   | ..   | ..   | ..   |
| WMO  | Global Insight Business Conditions and Risk Indicators                | <a href="http://www.globalinsight.com">http://www.globalinsight.com</a>                                       | ..   | 0.69 | 0.69 | 0.69 | 0.69 | 0.61 | 0.69 | 0.69 | 0.69 | 0.69 |

BRUNEI, 1996-2008

Aggregate Indicator: Control of Corruption



Individual Indicators used to construct Control of Corruption

| Code | Source  | Website   | 1996 | 1998 | 2000 | 2002 | 2003 | 2004 | 2005 | 2006 | 2007 | 2008 |
|------|---|---|------|------|------|------|------|------|------|------|------|------|
| ADB  | African Development Bank Country Policy and Institutional Assessments | <a href="http://www.afdb.org/">http://www.afdb.org/</a>   | ..   | ..   | ..   | ..   | ..   | ..   | ..   | ..   | ..   | ..   |
| AFR  | Afrobarometer   | <a href="http://www.afrobarometer.org">http://www.afrobarometer.org</a>                                       | ..   | ..   | ..   | ..   | ..   | ..   | ..   | ..   | ..   | ..   |
| ASD  | Asian Development Bank Country Policy and Institutional Assessments   | <a href="http://www.adb.org/">http://www.adb.org/</a>   | ..   | ..   | ..   | ..   | ..   | ..   | ..   | ..   | ..   | ..   |
| BPS  | Business Enterprise Environment Survey                                | <a href="http://www.worldbank.org/eca/governance">http://www.worldbank.org/eca/governance</a>                 | ..   | ..   | ..   | ..   | ..   | ..   | ..   | ..   | ..   | ..   |
| BRI  | Business Environment Risk Intelligence Business Risk Service          | <a href="http://www.beri.com">http://www.beri.com</a>   | ..   | ..   | ..   | ..   | ..   | ..   | ..   | ..   | ..   | ..   |
| BTI  | Bertelsmann Transformation Index                                      | <a href="http://www.bertelsmann-transformation-index.de/">http://www.bertelsmann-transformation-index.de/</a> | ..   | ..   | ..   | ..   | ..   | ..   | ..   | ..   | ..   | ..   |
| CCR  | Freedom House Countries at the Crossroads                             | <a href="http://www.freedomhouse.org">http://www.freedomhouse.org</a>   | ..   | ..   | ..   | ..   | ..   | ..   | ..   | ..   | ..   | ..   |
| DRI  | Global Insight Global Risk Service                                    | <a href="http://www.globalinsight.com">http://www.globalinsight.com</a>                                       | ..   | ..   | ..   | ..   | ..   | ..   | ..   | ..   | ..   | ..   |
| EIU  | Economist Intelligence Unit   | <a href="http://www.eiu.com">http://www.eiu.com</a>   | ..   | ..   | ..   | ..   | ..   | ..   | ..   | ..   | ..   | ..   |
| FRH  | Freedom House   | <a href="http://www.freedomhouse.org">http://www.freedomhouse.org</a>   | ..   | ..   | ..   | ..   | ..   | ..   | ..   | ..   | ..   | ..   |
| GAD  | Cerberus Corporate Intelligence Gray Area Dynamics                    | <a href="http://www.merchantinternational.com">http://www.merchantinternational.com</a>                       | ..   | ..   | ..   | ..   | ..   | ..   | ..   | ..   | ..   | ..   |
| GCB  | Transparency International Global Corruption Barometer Survey         | <a href="http://www.transparency.org">http://www.transparency.org</a>   | ..   | ..   | ..   | ..   | ..   | ..   | ..   | ..   | ..   | 0.85 |
| GCS  | World Economic Forum Global Competitiveness Survey                    | <a href="http://www.weforum.org">http://www.weforum.org</a>   | ..   | ..   | ..   | ..   | ..   | ..   | ..   | ..   | ..   | 0.56 |
| GII  | Global Integrity Index  | <a href="http://www.globalintegrity.org/">http://www.globalintegrity.org/</a>                                 | ..   | ..   | ..   | ..   | ..   | ..   | ..   | ..   | ..   | ..   |
| GWP  | Gallup World Poll   | <a href="http://www.gallupworldpoll.com">http://www.gallupworldpoll.com</a>                                   | ..   | ..   | ..   | ..   | ..   | ..   | ..   | ..   | ..   | ..   |
| IFD  | IFAD Rural Sector Performance Assessments                             | <a href="http://www.ifad.org">http://www.ifad.org</a>   | ..   | ..   | ..   | ..   | ..   | ..   | ..   | ..   | ..   | ..   |
| IPD  | Institutional Profiles Database                                       | <a href="http://www.cepii.fr/">http://www.cepii.fr/</a>   | ..   | ..   | ..   | ..   | ..   | ..   | ..   | ..   | ..   | ..   |
| LBO  | Latinobarometro   | <a href="http://www.latinobarometro.org">http://www.latinobarometro.org</a>                                   | ..   | ..   | ..   | ..   | ..   | ..   | ..   | ..   | ..   | ..   |
| MIG  | Merchant International Group Gray Area Dynamics                       | <a href="http://www.merchantinternational.com">http://www.merchantinternational.com</a>                       | ..   | ..   | ..   | ..   | ..   | ..   | ..   | ..   | ..   | ..   |
| PIA  | World Bank Country Policy and Institutional Assessments               | <a href="http://www.worldbank.org">http://www.worldbank.org</a>   | ..   | ..   | ..   | ..   | ..   | ..   | ..   | ..   | ..   | ..   |
| PRC  | Political Economic Risk Consultancy Corruption in Asia                | <a href="http://www.asiarisk.com/">http://www.asiarisk.com/</a>   | ..   | ..   | ..   | ..   | ..   | ..   | ..   | ..   | ..   | ..   |
| PRS  | Political Risk Services International Country Risk Guide              | <a href="http://www.prsgroup.com">http://www.prsgroup.com</a>   | 0.67 | 0.50 | 0.42 | 0.42 | 0.42 | 0.42 | 0.42 | 0.42 | 0.42 | 0.42 |
| VAB  | Vanderbilt University Americas Barometer Survey                       | <a href="http://www.lapopsurveys.org">http://www.lapopsurveys.org</a>   | ..   | ..   | ..   | ..   | ..   | ..   | ..   | ..   | ..   | ..   |
| WCY  | Institute for management & development World Competitiveness Yearbook | <a href="http://www.imd.ch">http://www.imd.ch</a>   | ..   | ..   | ..   | ..   | ..   | ..   | ..   | ..   | ..   | ..   |
| WMO  | Global Insight Business Conditions and Risk Indicators                | <a href="http://www.globalinsight.com">http://www.globalinsight.com</a>                                       | ..   | 0.63 | 0.63 | 0.63 | 0.63 | 0.63 | 0.63 | 0.63 | 0.63 | 0.63 |