

Country Data Report for ANGOLA, 1996-2008

This Data Report provides a summary of the six aggregate governance indicators, together with all of the publicly-available disaggregated data on which the aggregate indicators are based. The underlying data as well as methodological issues are described more fully in "Governance Matters VIII: Governance Indicators for 1996-2008" (June 2009).

The Report displays the country's performance for all available years between 1996 and 2008 in six governance dimensions: i) Voice & Accountability, ii) Political Stability and Lack of Violence/Terrorism, iii) Government Effectiveness, iv) Regulatory Quality, v) Rule of Law, and vi) Control of Corruption. Each page shows the country's percentile rank on one of the six governance indicators. Percentile ranks indicate the percentage of countries worldwide that rate below the selected country. Higher values thus indicate better governance ratings. The graph also reports the margins of error displayed in the line charts by dashed lines, and corresponding to a 90% confidence interval. This means that there is a 90 percent probability that governance is within the indicated range.

Underneath the line charts, the Report also displays data from all the underlying sources used for that indicator. Individual ratings have been rescaled to run from 0 (low) to 1 (high). These scores are comparable over time and across countries since most individual measures are based on similar methodologies over time. Scores from different individual indicators are not however directly comparable with each other since the different data sources use different units and cover different sets of countries. The data from the individual indicators are in fact further rescaled to make them comparable across data sources before constructing the aggregate governance indicators. Note that for some variables we present an "NP", where "NP" stands for "Not Public", because the data is confidential and cannot be publicly disclosed at the request of the organizations producing the data. To find out more about each source/organization click on the provided links. More information about each of the underlying organization/source can also be found in Appendices A and B of the **Governance Matters VIII** paper.

Relevant links:

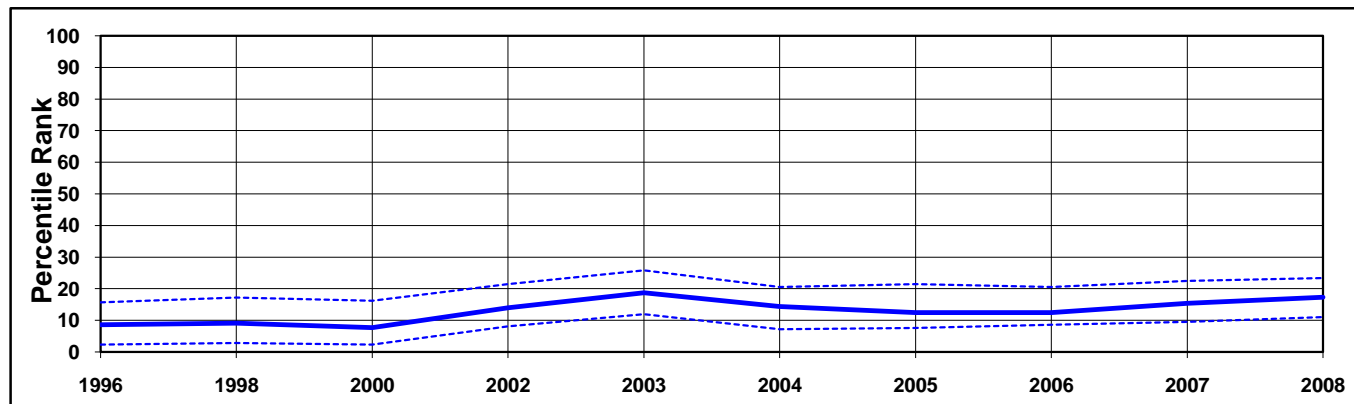
www.govindicators.org
www.worldbank.org/wbi/governance/

Disclaimer

The data and research reported here do not reflect the official views of the World Bank, its Executive Directors, or the countries they represent. The WGI are not used by the World Bank Group to allocate resources.

ANGOLA, 1996-2008

Aggregate Indicator: Voice & Accountability

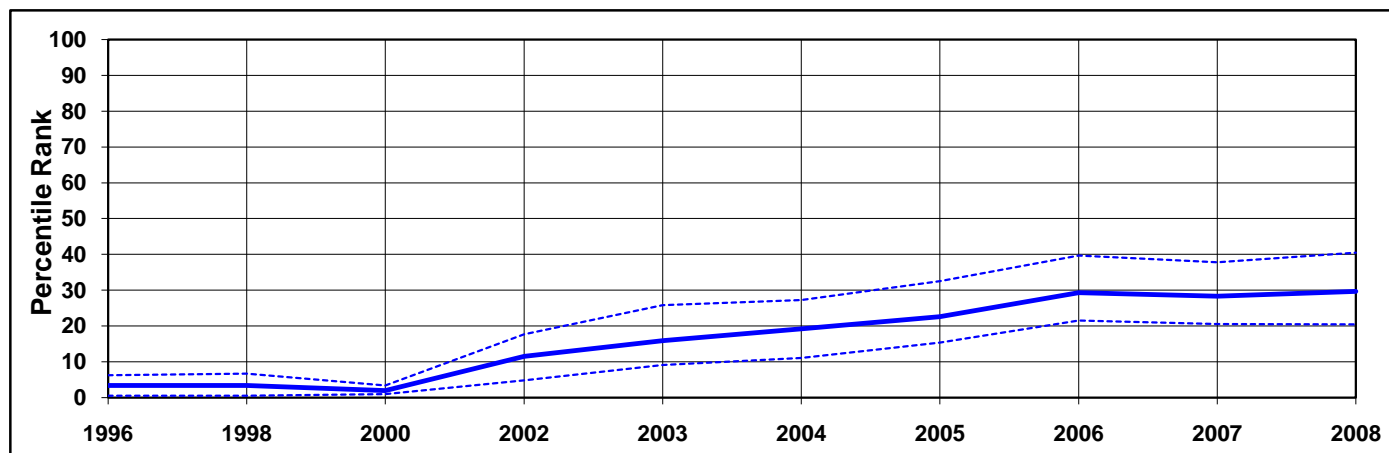


Individual Indicators used to construct Voice & Accountability

Code	Source	Website	1996	1998	2000	2002	2003	2004	2005	2006	2007	2008
AEO	OECD Development Center African Economic Outlook	http://www.oecd.org/dev/aeo
AFR	Afrobarometer	http://www.afrobarometer.org
BTI	Bertelsmann Transformation Index	http://www.bertelsmann-transformation-index.de/	0.25	0.25	0.25	0.25	0.25	0.33	0.33
CCR	Freedom House Countries at the Crossroads	http://www.freedomhouse.org	0.33	0.33	0.38	0.38	0.38
EIU	Economist Intelligence Unit	http://www.eiu.com	0.06	0.06	0.06	0.06	0.06	0.13	0.19	0.08	0.25	0.32
FRH	Freedom House	http://www.freedomhouse.org	0.21	0.21	0.18	0.27	0.30	0.30	0.30	0.32	0.31	0.32
GAD	Cerberus Corporate Intelligence Gray Area Dynamics	http://www.merchantinternational.com	0.48
GCS	World Economic Forum Global Competitiveness Survey	http://www.weforum.org	0.29	0.35	..	0.38
GII	Global Integrity Index	http://www.globalintegrity.org/	0.42
GWP	Gallup World Poll	http://www.gallupworldpoll.com	0.37	0.35	0.37
HUM	Cingranelli-Richards (CIRI) Human Rights Database	http://www.humanrightsdata.com	0.00	0.13	0.13	0.25	0.50	0.50	0.38	0.38	0.44	0.44
IFD	IFAD Rural Sector Performance Assessments	http://www.ifad.org	0.21	0.25	0.39	0.46	0.45
IPD	Institutional Profiles Database	http://www.cepii.fr/
LBO	Latinobarometro	http://www.latinobarometro.org
MSI	IREX Media Sustainability Index	http://www.irex.org
OBI	International Budget Project Open Budget Index	http://www.internationalbudget.org/	0.04	0.04	0.04	0.03
PRS	Political Risk Services International Country Risk Guide	http://www.prsgroup.com	0.25	0.42	0.33	0.33	0.42	0.33	0.33	0.33	0.33	0.33
RSF	Reporters Without Borders Press Freedom Index	http://www.rsf.org	0.70	0.72	0.75	0.83	0.80	0.77	0.71
VAB	Vanderbilt University Americas Barometer Survey	http://www.lapopsurveys.org
WCY	Institute for management & development World Competitiveness Yearbook	http://www.imd.ch
WMO	Global Insight Business Conditions and Risk Indicators	http://www.globalinsight.com	..	0.13	0.13	0.25	0.31	0.33	0.31	0.31	0.31	0.34

ANGOLA, 1996-2008

Aggregate Indicator: Political Stability and Absence of Violence

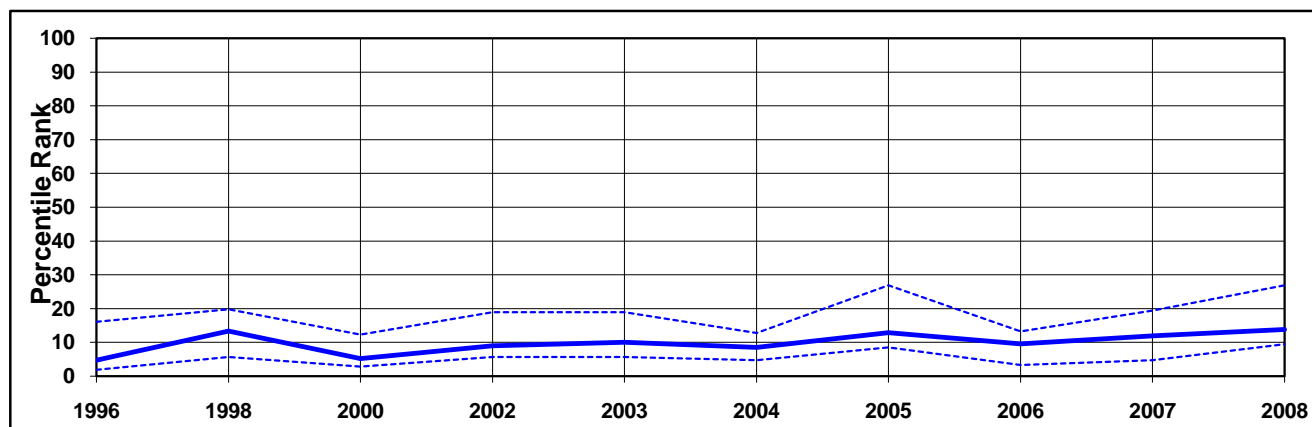


Individual Indicators used to construct Political Stability and Absence of Violence

Code	Source	Website	1996	1998	2000	2002	2003	2004	2005	2006	2007	2008
AEO	OECD Development Center African Economic Outlook	http://www.oecd.org/dev/aeo	0.00	0.50	0.50	1.00	0.50
BRI	Business Environment Risk Intelligence Business Risk Service	http://www.beri.com	0.44	0.51	0.46	0.51	0.54	0.57	0.57	0.59	0.59	0.59
DRI	Global Insight Global Risk Service	http://www.globalinsight.com	0.46	0.47	0.06	0.44	0.45	0.69	0.78	0.82	0.87	0.87
EIU	Economist Intelligence Unit	http://www.eiu.com	0.15	0.15	0.15	0.20	0.30	0.45	0.35	0.35	0.43	0.65
GAD	Cerberus Corporate Intelligence Gray Area Dynamics	http://www.merchantinternational.com	0.53
GCS	World Economic Forum Global Competitiveness Survey	http://www.weforum.org	0.64	0.71	..	0.80
HUM	Cingranelli-Richards Human Rights Database & Political Terror Scale	http://www.humanrightsdata.com	0.06	0.00	0.06	0.19	0.21	0.21	0.35	0.50	0.27	0.27
IJT	iJET Country Security Risk Ratings	https://worldcue.ijet.com/tic/login.jsp	0.25	0.25	0.25	0.25	0.25
IPD	Institutional Profiles Database	http://www.cepii.fr/
MIG	Cerberus Corporate Intelligence Gray Area Dynamics	http://www.merchantinternational.com	0.25	0.25	0.30	0.35	0.40	0.39	..
PRS	Political Risk Services International Country Risk Guide	http://www.prsgroup.com	0.52	0.47	0.63	0.66	0.74	0.72	0.73	0.74	0.73	0.75
WCY	Institute for management & development World Competitiveness Yearbook	http://www.imd.ch
WMO	Global Insight Business Conditions and Risk Indicators	http://www.globalinsight.com	..	0.13	0.13	0.38	0.50	0.47	0.56	0.69	0.69	0.69

ANGOLA, 1996-2008

Aggregate Indicator: Government Effectiveness

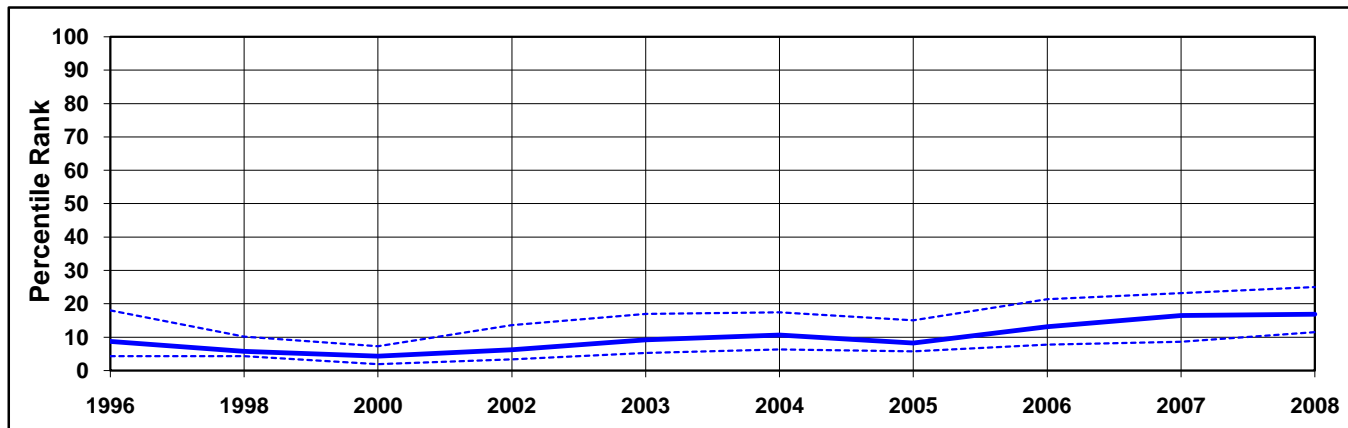


Individual Indicators used to construct Government Effectiveness

Code	Source	Website	1996	1998	2000	2002	2003	2004	2005	2006	2007	2008
ADB	African Development Bank Country Policy and Institutional Assessments	http://www.afdb.org/	NP	NP	NP	NP	NP	NP	0.35	NP	NP	0.43
AFR	Afrobarometer	http://www.afrobarometer.org
ASD	Asian Development Bank Country Policy and Institutional Assessments	http://www.adb.org/
BPS	Business Enterprise Environment Survey	http://www.worldbank.org/eca/governance
BRI	Business Environment Risk Intelligence Business Risk Service	http://www.beri.com	0.28	0.28	0.28	0.28	0.28	0.28	0.28	0.28	0.28	0.28
BTI	Bertelsmann Transformation Index	http://www.bertelsmann-transformation-index.de/	0.19	0.19	0.37	0.37	0.37	0.30	0.30
DRI	Global Insight Global Risk Service	http://www.globalinsight.com	0.19	0.25	0.04	0.37	0.37	0.48	0.69	0.73	0.71	0.74
EGV	Brown University's Center for Public Policy	http://www.insidepolitics.org/egovt06int.pdf	0.44	0.24	0.20	0.23	0.27	0.28	0.29
EIU	Economist Intelligence Unit	http://www.eiu.com	0.00	0.00	0.00	0.00	0.00	0.00	0.13	0.00	0.00	0.13
GCS	World Economic Forum Global Competitiveness Survey	http://www.weforum.org	0.27	0.25	..	0.30
GWP	Gallup World Poll	http://www.gallupworldpoll.com	0.41	0.35	0.41
IFD	IFAD Rural Sector Performance Assessments	http://www.ifad.org	0.20	0.17	0.27	0.30	0.45
IPD	Institutional Profiles Database	http://www.cepii.fr/
LBO	Latinobarometro	http://www.latinobarometro.org
MIG	Cerberus Corporate Intelligence Gray Area Dynamics	http://www.merchantinternational.com	0.15	0.15	0.15	0.20	0.20	0.20	..
PIA	World Bank Country Policy and Institutional Assessments	http://www.worldbank.org	NP	NP	NP	NP	NP	NP	0.28	0.28	0.33	0.33
PRS	Political Risk Services International Country Risk Guide	http://www.prsgroup.com	0.33	0.33	0.25	0.25	0.25	0.25	0.25	0.25	0.38	0.38
WCY	Institute for management & development World Competitiveness Yearbook	http://www.imd.ch
WMO	Global Insight Business Conditions and Risk Indicators	http://www.globalinsight.com	..	0.31	0.31	0.31	0.38	0.38	0.38	0.38	0.38	0.34

ANGOLA, 1996-2008

Aggregate Indicator: Regulatory Quality

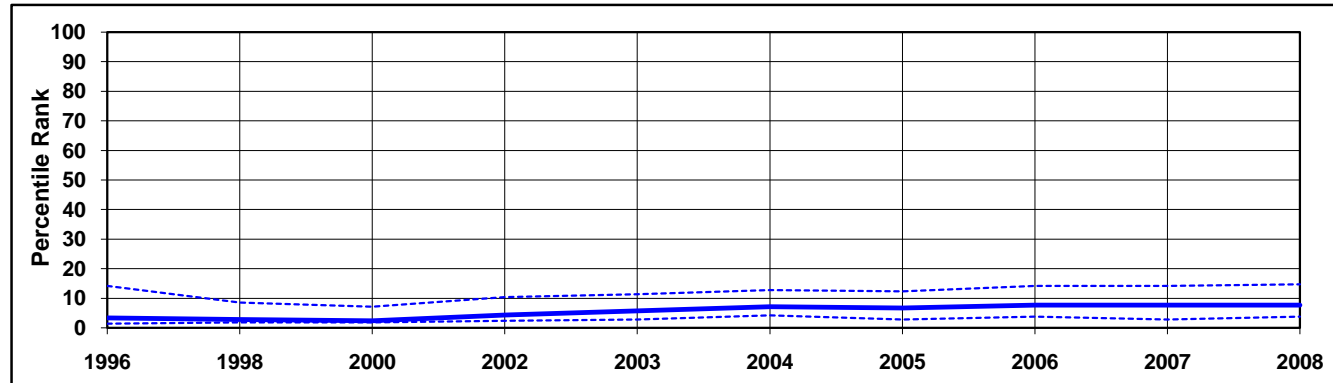


Individual Indicators used to construct Regulatory Quality

Code	Source	Website	1996	1998	2000	2002	2003	2004	2005	2006	2007	2008
ADB	African Development Bank Country Policy and Institutional Assessments	http://www.afdb.org/	NP	NP	NP	NP	NP	NP	0.27	NP	NP	0.43
ASD	Asian Development Bank Country Policy and Institutional Assessments	http://www.adb.org/
BPS	Business Enterprise Environment Survey	http://www.worldbank.org/eca/governance
BTI	Bertelsmann Transformation Index	http://www.bertelsmann-transformation-index.de/	0.00	0.00	0.30	0.30	0.30	0.33	0.33
DRI	Global Insight Global Risk Service	http://www.globalinsight.com	0.69	0.75	0.61	0.62	0.65	0.77	0.88	0.87	0.86	0.87
EBR	European Bank for Reconstruction & Development Transition Report	http://www.ebrd.org
EIU	Economist Intelligence Unit	http://www.eiu.com	0.20	0.20	0.20	0.20	0.20	0.20	0.15	0.45	0.50	0.50
GAD	Cerberus Corporate Intelligence Gray Area Dynamics	http://www.merchantinternational.com	0.55
GCS	World Economic Forum Global Competitiveness Survey	http://www.weforum.org	0.31	0.32	..	0.35
HER	Heritage Foundation Index of Economic Freedom	http://www.heritage.org	0.30	0.30	0.40	0.30	0.30	0.30
IFD	IFAD Rural Sector Performance Assessments	http://www.ifad.org	0.37	0.37	0.38	0.38	0.36
IPD	Institutional Profiles Database	http://www.cepii.fr/
MIG	Merchant International Group Gray Area Dynamics	http://www.merchantinternational.com	0.23	0.18	0.25	0.25	0.25	0.28	..
PIA	World Bank Country Policy and Institutional Assessments	http://www.worldbank.org	NP	NP	NP	NP	NP	NP	0.40	0.40	0.40	0.40
PRS	Political Risk Services International Country Risk Guide	http://www.prsgroup.com	0.27	0.17	0.09	0.68	0.64	0.64	0.59	0.64	0.64	0.64
WCY	Institute for management & development World Competitiveness Yearbook	http://www.imd.ch
WMO	Global Insight Business Conditions and Risk Indicators	http://www.globalinsight.com	..	0.25	0.25	0.25	0.31	0.37	0.31	0.31	0.31	0.31

ANGOLA, 1996-2008

Aggregate Indicator: Rule of Law

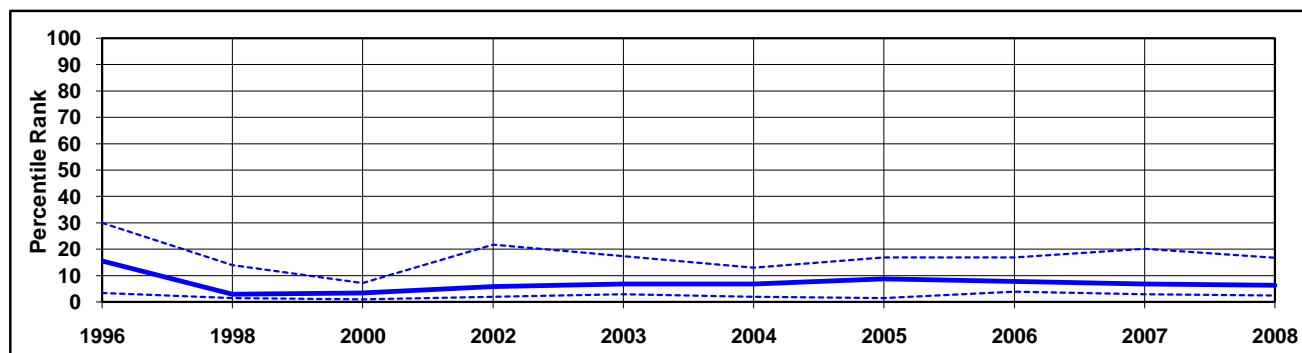


Individual Indicators used to construct Rule of Law

Code	Source	Website	1996	1998	2000	2002	2003	2004	2005	2006	2007	2008
ADB	African Development Bank Country Policy and Institutional Assessments	http://www.afdb.org/	NP	NP	NP	NP	NP	NP	0.30	NP	NP	0.30
AFR	Afrobarometer	http://www.afrobarometer.org
ASD	Asian Development Bank Country Policy and Institutional Assessments	http://www.adb.org/
BPS	Business Enterprise Environment Survey	http://www.worldbank.org/eca/governance
BRI	Business Environment Risk Intelligence Business Risk Service	http://www.beri.com	0.20	0.21	0.20	0.21	0.20	0.20	0.20	0.21	0.21	0.21
BTI	Bertelsmann Transformation Index	http://www.bertelsmann-transformation-index.de/	0.00	0.00	0.33	0.33	0.33	0.27	0.27
CCR	Freedom House Countries at the Crossroads	http://www.freedomhouse.org	0.32	0.32	0.37	0.37	0.37
DRI	Global Insight Global Risk Service	http://www.globalinsight.com	0.48	0.42	0.13	0.39	0.39	0.49	0.65	0.70	0.72	0.72
EIU	Economist Intelligence Unit	http://www.eiu.com	0.06	0.06	0.06	0.06	0.06	0.16	0.16	0.28	0.25	0.28
FRH	Freedom House	http://www.freedomhouse.org
GAD	Cerberus Corporate Intelligence Gray Area Dynamics	http://www.merchantinternational.com	0.70
GCS	World Economic Forum Global Competitiveness Survey	http://www.weforum.org	0.37	0.31	..	0.37
GII	Global Integrity Index	http://www.globalintegrity.org/	0.21
GWP	Gallup World Poll	http://www.gallupworldpoll.com	0.59	0.52	0.58
HER	Heritage Foundation Index of Economic Freedom	http://www.heritage.org	0.30	0.30	0.30	0.20	0.20	0.20
HUM	Cingranelli-Richards (CIRI) Human Rights Database	http://www.humanrightsdata.com	0.00	0.00	0.00	0.00	0.00	0.50	0.00	0.00	0.50	0.50
IFD	IFAD Rural Sector Performance Assessments	http://www.ifad.org	0.16	0.18	0.27	0.28	0.30
IPD	Institutional Profiles Database	http://www.cepii.fr/
LBO	Latinobarometro	http://www.latinobarometro.org
MIG	Merchant International Group Gray Area Dynamics	http://www.merchantinternational.com	0.15	0.20	0.23	0.18	0.18	0.22	..
PIA	World Bank Country Policy and Institutional Assessments	http://www.worldbank.org	..	NP	NP	NP	NP	NP	0.20	0.20	0.20	0.20
PRS	Political Risk Services International Country Risk Guide	http://www.prsgroup.com	0.33	0.50	0.50	0.50	0.50	0.50	0.50	0.50	0.50	0.50
TPR	US State Department Trafficking in People report	http://www.state.gov/g/tip/rls/tiprpt	0.50	0.50	0.67	0.67	0.67	0.67	0.67	0.67
VAB	Vanderbilt University Americas Barometer Survey	http://www.lapopsurveys.org
WCY	Institute for management & development World Competitiveness Yearbook	http://www.imd.ch
WMO	Global Insight Business Conditions and Risk Indicators	http://www.globalinsight.com	..	0.25	0.25	0.25	0.25	0.31	0.25	0.25	0.25	0.25

ANGOLA, 1996-2008

Aggregate Indicator: Control of Corruption



Individual Indicators used to construct Control of Corruption

Code	Source	Website	1996	1998	2000	2002	2003	2004	2005	2006	2007	2008
ADB	African Development Bank Country Policy and Institutional Assessments	http://www.afdb.org/	NP	NP	NP	NP	NP	NP	0.30	NP	NP	0.30
AFR	Afrobarometer	http://www.afrobarometer.org
ASD	Asian Development Bank Country Policy and Institutional Assessments	http://www.adb.org/
BPS	Business Enterprise Environment Survey	http://www.worldbank.org/eca/governance
BRI	Business Environment Risk Intelligence Business Risk Service	http://www.beri.com	0.18	0.19	0.18	0.19	0.18	0.18	0.18	0.17	0.17	0.17
BTI	Bertelsmann Transformation Index	http://www.bertelsmann-transformation-index.de/	0.10	0.10	0.10	0.25	0.25
CCR	Freedom House Countries at the Crossroads	http://www.freedomhouse.org	0.30	0.30	0.30	0.30	0.30
DRI	Global Insight Global Risk Service	http://www.globalinsight.com	0.33	0.33	0.05	0.13	0.13	0.13	0.55	0.55	0.55	0.55
EIU	Economist Intelligence Unit	http://www.eiu.com	0.00	0.00	0.00	0.00	0.00	0.00	0.00	0.00	0.00	0.00
FRH	Freedom House	http://www.freedomhouse.org
GAD	Cerberus Corporate Intelligence Gray Area Dynamics	http://www.merchantinternational.com	0.20
GCB	Transparency International Global Corruption Barometer Survey	http://www.transparency.org
GCS	World Economic Forum Global Competitiveness Survey	http://www.weforum.org	0.31	0.38	..	0.43
GII	Global Integrity Index	http://www.globalintegrity.org/	0.00
GWP	Gallup World Poll	http://www.gallupworldpoll.com	0.31	0.30	0.31
IFD	IFAD Rural Sector Performance Assessments	http://www.ifad.org	0.16	0.20	0.20	0.27	0.25
IPD	Institutional Profiles Database	http://www.cepii.fr/
LBO	Latinobarometro	http://www.latinobarometro.org
MIG	Merchant International Group Gray Area Dynamics	http://www.merchantinternational.com	0.10	0.15	0.15	0.15	0.15	0.18	..
PIA	World Bank Country Policy and Institutional Assessments	http://www.worldbank.org	..	NP	NP	NP	NP	NP	0.30	0.30	0.30	0.30
PRC	Political Economic Risk Consultancy Corruption in Asia	http://www.asiarisk.com/
PRS	Political Risk Services International Country Risk Guide	http://www.prsgroup.com	0.50	0.33	0.33	0.33	0.33	0.33	0.33	0.33	0.33	0.33
VAB	Vanderbilt University Americas Barometer Survey	http://www.lapopsurveys.org
WCY	Institute for management & development World Competitiveness Yearbook	http://www.imd.ch
WMO	Global Insight Business Conditions and Risk Indicators	http://www.globalinsight.com	..	0.13	0.13	0.13	0.13	0.25	0.13	0.13	0.13	0.19